

Using the TeamPage Feed Reader

Author: Christopher Nuzum

Creation Date and Time: June 2, 2010 1:51 PM

Table of Contents

Using the TeamPage Feed Reader

Doc361: Using the TeamPage Feed Reader	3
Doc3: About RSS Ingestion	3
Doc154: Launching the Feed Manager	3
Doc7: Adding a Feed	5
Doc77: Editing a Feed	7
Doc204: Previewing a Feed	9
Doc30: Changing the Default Polling Interval	10
Doc304: Troubleshooting	12

Using the TeamPage Feed Reader

Using the TeamPage Feed Reader

Doc361: April 29, 2008 11:40 AM, Posted by Christopher Nuzum, Edited by Jordan Frank

TeamPage Feed Reader is an option you can purchase which will publish external feeds into your Traction TeamPage server. It is not to be confused with [RSS Feeds](#) which are published automatically from the Traction TeamPage Server.

- [About RSS Ingestion](#)
 - [Launching the Feed Manager](#)
 - [Adding a Feed](#)
 - [Editing a Feed](#)
 - [Previewing a Feed](#)
 - [Changing the Default Polling Interval](#)
 - [Troubleshooting](#)
-

About RSS Ingestion

Doc3: March 22, 2008 3:44 PM, Posted by Documentation Importer, Edited by Jordan Frank

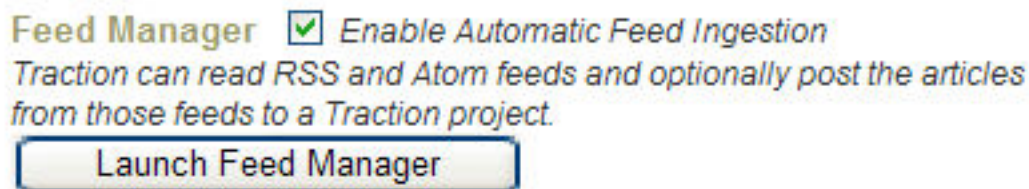
Traction TeamPage can be purchased with the optional [TeamPage Feed Reader Module](#). The Feed Reader that enables automatic reading and posting of RSS and Atom feeds. TeamPage Feed Reader's [Feed Manager](#) can periodically poll feed sources, detecting new articles and posting them to designated projects with specified labels.

Traction can read feeds that require authentication, and feeds on servers that require HTTPS access.

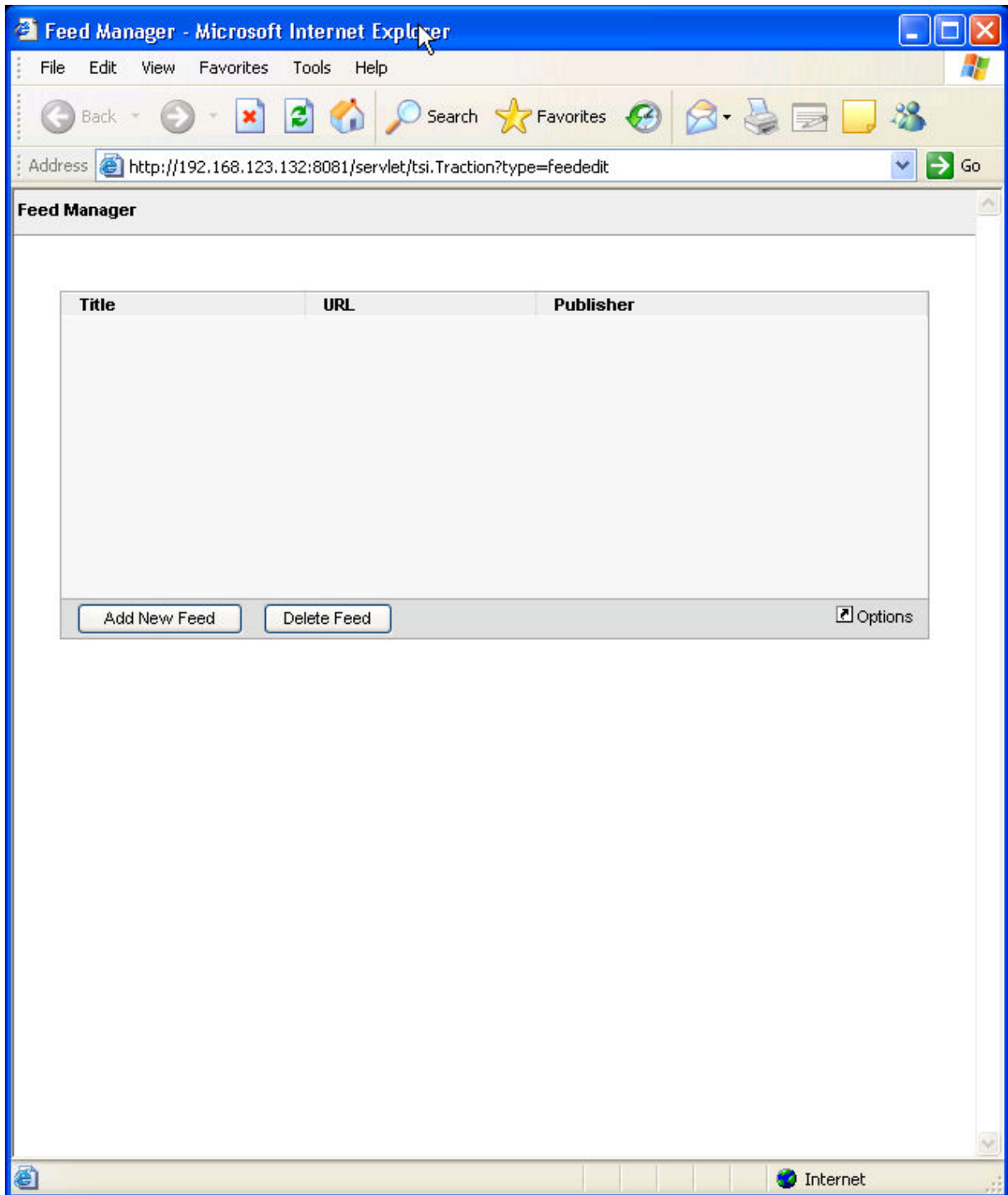
Launching the Feed Manager

Doc154: March 22, 2008 4:06 PM, Posted by Documentation Importer, Edited by Christopher Nuzum

If your license has the Feed Manager enabled, you will find a link to launch it in Server Setup | General.



This launches the Feed Manager window. By default, no feeds are configured.



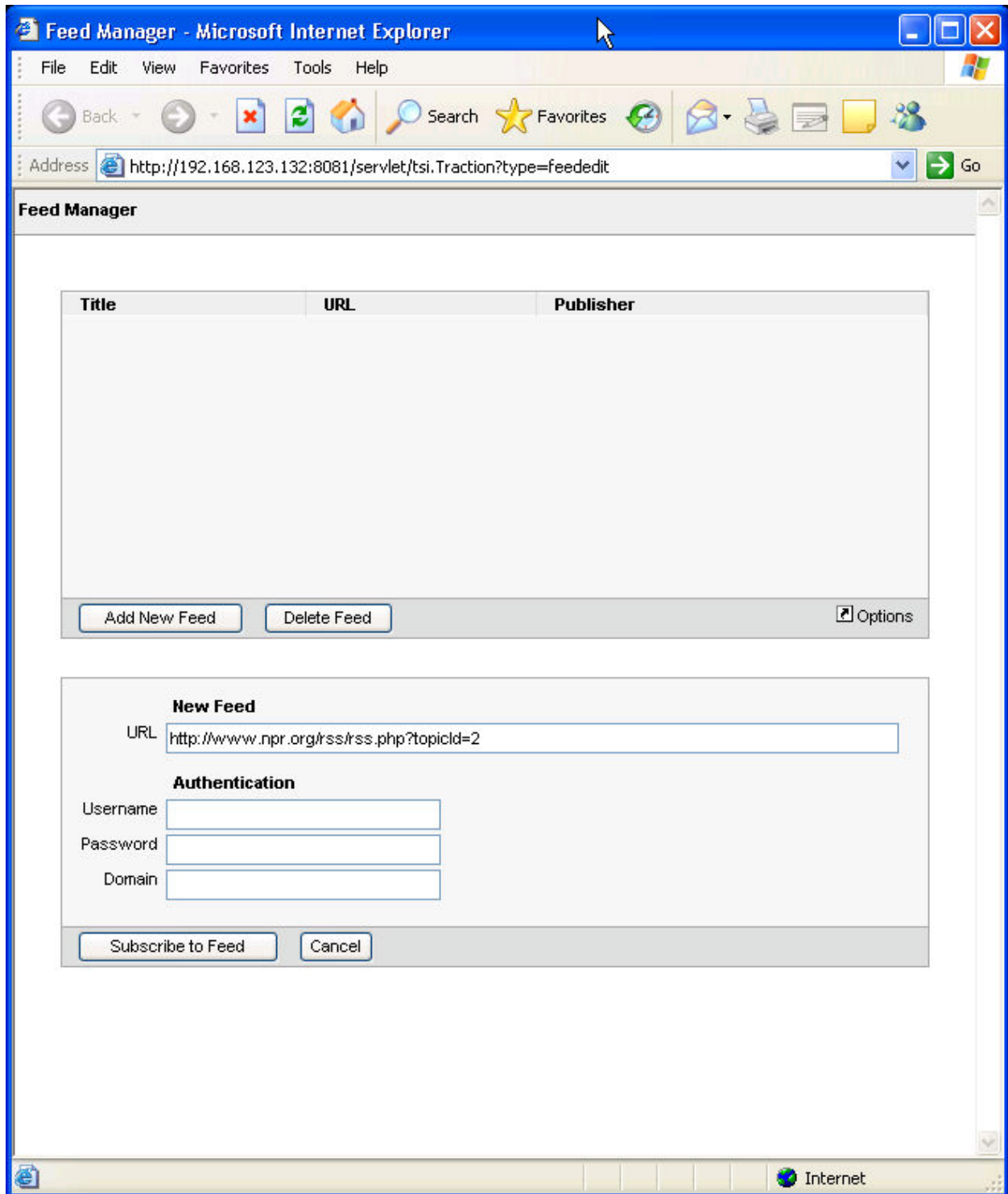
Adding a Feed

Doc7: March 22, 2008 3:45 PM, Posted by Documentation Importer

To add a new feed, click the Add New Feed button:



This opens up a new panel underneath the empty feed list, into which you can enter the feed's information.



Most RSS and Atom feeds don't require authentication; in those cases, you can leave the additional fields blank.

If, while fetching a URL, the Feed Manager is challenged to login via realms, it will pass the username, password, and the domain you provide.

In most cases, the domain is optional, but it is required if you are trying to read an authenticated feed from another Traction server configured with Active Directory.

Once you have entered the information, click the "Subscribe to Feed" button. You can repeat this for as many feeds as you like.

Editing a Feed

Doc77: March 22, 2008 3:55 PM, Posted by Documentation Importer

Once you have added one or more feeds, you can click any one of the feeds listed. A purple background will mark your selection, and a panel will display underneath that lets you edit the feed's properties.

Feed Manager ?

Title	URL	Publisher
mozillaZine	http://www.mozillazine.org/contents.rdf	webmaster@mozillazine.org
NPR Topics: Top Stories	http://www.npr.org/rss/rss.php?topicid=2	
NYT > Home and Garden	http://www.nytimes.com/services/xml/rss/nyt ...	
Press Advisories - U.S. Dept. of Defense	http://www.dod.gov/news/rss_advisories.xml	
Press Advisories - U.S. Dept. of Defense	http://www.dod.gov/news/rss_advisories.xml	
Production Journal - Customer Chronology	http://192.168.123.1/traction/post?proj ...	
Production Journal - Customer: FAQ	http://192.168.123.1/traction/post?proj ...	
RI bills_working - Month	http://www2.sec.state.ri.us/billtracker ...	

Options

Feed

URL

Authentication

Username

Password

Domain

Details

Title
 Use title from feed

Description
 Use description from feed

Frequency minutes
 Use default frequency

Journal

Project

Labels

Post as
 Automatically post articles from this feed
 Download enclosures

Status

Last Update Fri, 27 May 2005 23:10:37 EDT
Last Error

You will notice that a default title and description are pulled from the feed itself.

Under **Details** you can edit the title, description, and frequency.

The *frequency* is how often to poll the feed. Most RSS readers are encouraged to check at intervals of 30 minutes or longer. Some sites punish sites that check more frequently than every 30 minutes by disabling them from reading feeds altogether.

Under **Journal** you can choose a *project* to which to post articles from the current feed, *labels* to apply to those articles, and the *user* as whom the articles should be posted.

Under journal, you can click the checkbox next to "Automatically post articles from this feed". Until this checkbox is checked, no articles will be posted.

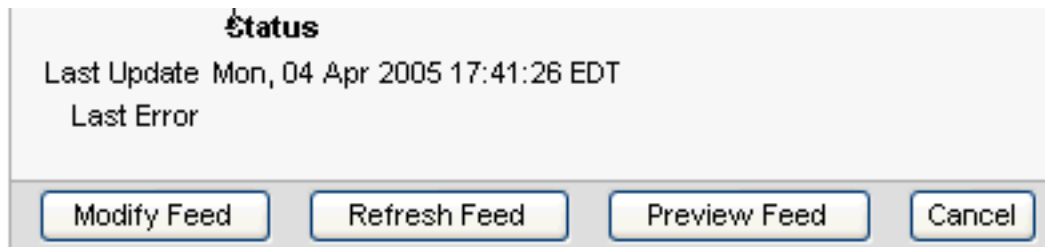
Finally, you can also check the *Download Enclosures* checkbox; if you do, enclosures (e.g. podcasting audio files or Traction attachments) identified in the feed will be attached to the Traction article that is posted.

Note: Every time you change settings, you must click the "Modify Feed" button to save your changes.

Previewing a Feed

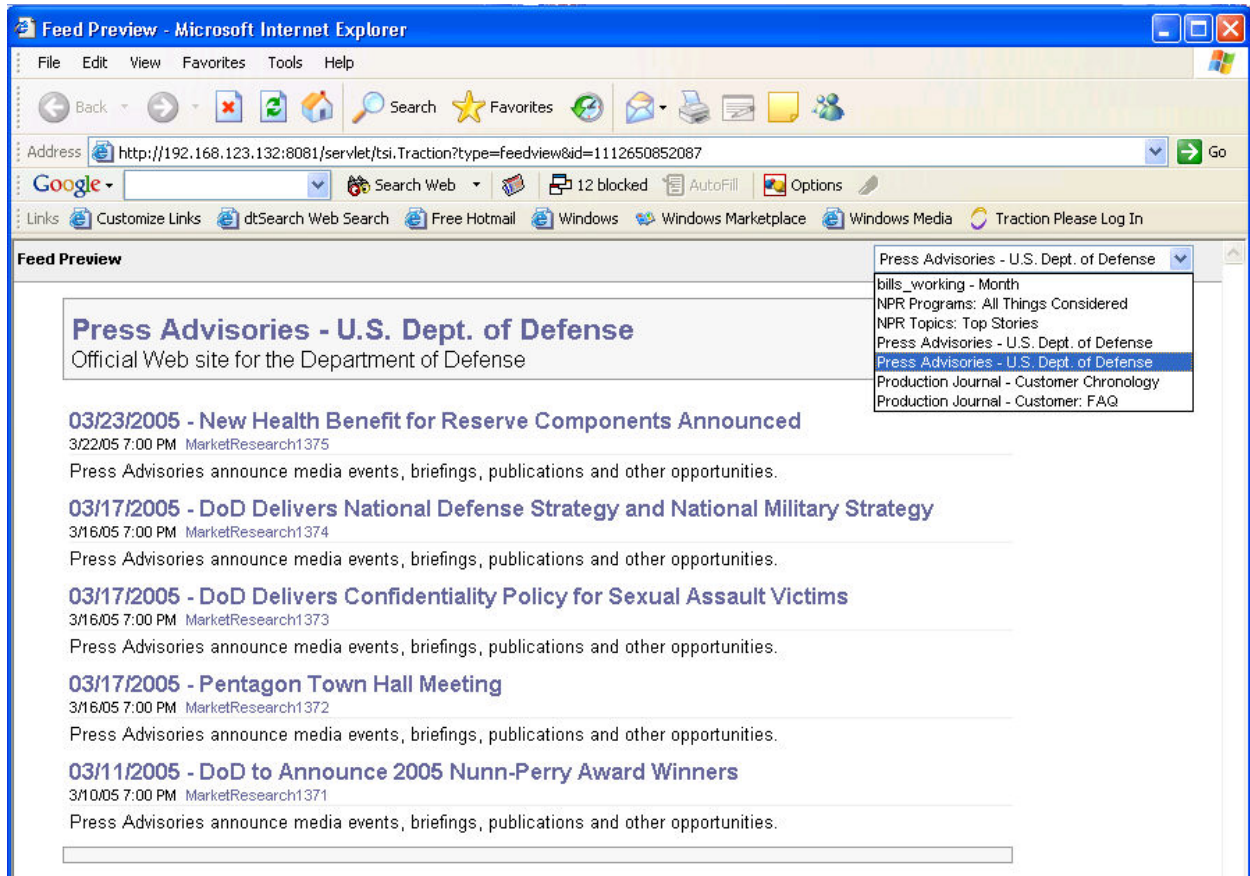
Doc204: March 22, 2008 4:12 PM, Posted by Documentation Importer, Edited by Christopher Nuzum

You can preview an RSS feed to make sure that its contents are being read correctly by clicking the *preview feed* button at the bottom of the feed details panel.



When you click *preview feed*, the Feed Preview window opens, showing a preview of the current feed.

There is also a pulldown-menu that lets you switch between previews of all configured feeds.



If there is a date and a TractionID after a feed's title, it means that the feed has already been posted to Traction. You can click the TractionID to jump to the corresponding entry.

03/23/2005 - New Health Benefit for Reserve Components Announced

important

MarketResearch1375 (#) | April 4, 2005 | 5:41:27 PM EDT
 Posted by Chris Nuzum

Press Advisories announce media events, briefings, publications and other opportunities. 01

Original: 03/23/2005 - New Health Benefit for Reserve Components Announced
Source: Press Advisories - U.S. Dept. of Defense

The resulting Traction article shows links to the original article and to the source site.

Changing the Default Polling Interval

Doc30: March 22, 2008 3:47 PM, Posted by Documentation Importer

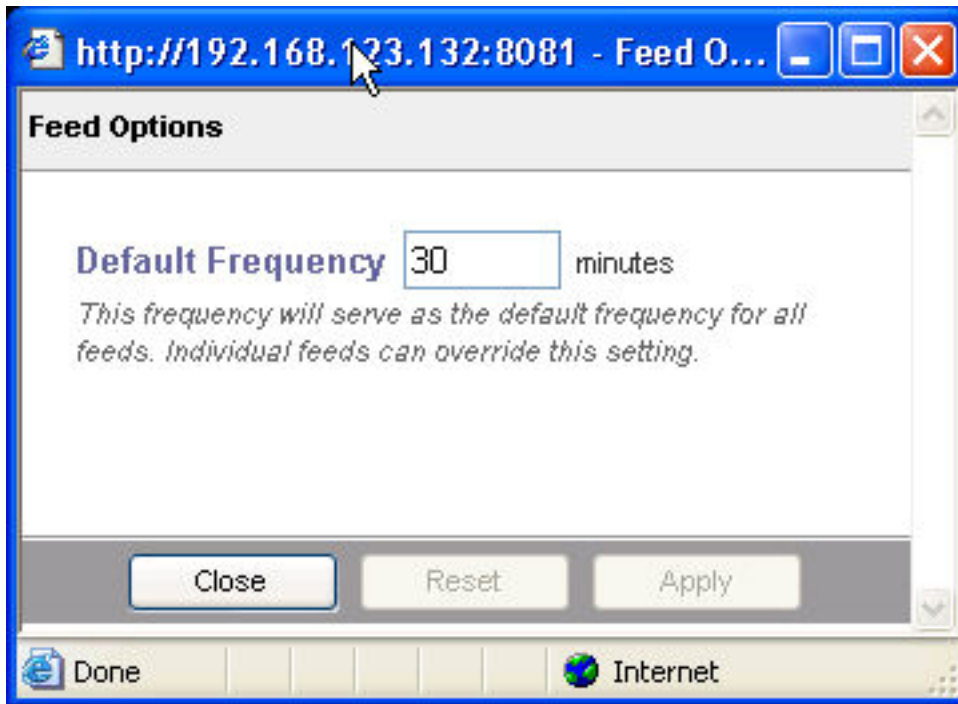
Clicking the "Options" link at the bottom-right of the feed list launches the Feed Options dialog.

Feed Manager

Title	URL	Publisher
bills_working - Month	http://www2.sec.state.ri.us/billtracker ...	
NPR Programs: All Things Considered	http://www.npr.org/rss/rss.php?prgId=2	
NPR Topics: Top Stories	http://www.npr.org/rss/rss.php?topicId=2	
Press Advisories - U.S. Dept. of Defense	http://www.dod.gov/news/rss_advisories.xml	
Press Advisories - U.S. Dept. of Defense	http://www.dod.gov/news/rss_advisories.xml	
Production Journal - Customer Chronology	http://192.168.123.1/traction/post?proj ...	
Production Journal - Customer: FAQ	http://192.168.123.1/traction/post?proj ...	

Buttons: Add New Feed, Delete Feed, Options

This dialog lets you set the Default Frequency for polling of all feeds. If you change the default frequency, any feed set to use the current default will change frequency accordingly.



Troubleshooting

Doc304: March 22, 2008 4:24 PM, Posted by Documentation Importer

Certificate Trust Problems

Last Error javax.net.ssl.SSLHandshakeException: java.security.cert.CertificateException: Untrusted Server Certificate Chain

Versions of the Feed Manager prior to 3.6 FCS may report "Untrusted Server Certificate Chain" with HTTPS feeds. Upgrading to 3.6 FCS should prevent this problem.

No Permission to Post

Last Error The user **jfrank** does not have permission to post new articles to the **MarketResearch** project.

Traction will not let you post a feed to a project as a user who does not have permission to post to that project. To resolve this you can either select an alternate user, or modify the intended user's permissions.