

# Advanced Features and Concepts

Author: Christopher Nuzum

Creation Date and Time: June 2, 2010 1:55 PM

# Table of Contents

## Advanced Features and Concepts

<a href="#">Doc360: Advanced Features and Concepts</a>	3
<a href="#">Doc139: Installing Instant Publisher</a>	3
<a href="#">Doc18: Available Skins</a>	10
<a href="#">Doc300: Traction Skins</a>	10
<a href="#">Doc26: Changing Skins</a>	11
<a href="#">Doc56: Customizing Skin Settings</a>	12
<a href="#">Doc318: Using the Skin Stylesheet Editor</a>	37
<a href="#">Doc236: Search Skin - Configuring an External Search Engine</a>	39
<a href="#">Doc230: RSS and Atom - Configuring Feeds from Traction</a>	40
<a href="#">Doc293: Trackback - In and Out</a>	41
<a href="#">Doc295: Trackback InboundSetup</a>	41
<a href="#">Doc294: Trackback - Sending Trackback Pings from Traction</a>	46
<a href="#">Doc537: Audit Trail</a>	50
<a href="#">Doc83: Email Reply Templates</a>	55
<a href="#">Doc223: Project Templates</a>	55
<a href="#">Doc24: Changing Perspective</a>	57
<a href="#">Doc292: Topics vs. Relationships</a>	58
<a href="#">Doc19: Backup and Maintenance</a>	60

# Advanced Features and Concepts

## ***Advanced Features and Concepts***

Doc360: April 29, 2008 11:38 AM, Posted and Edited by Christopher Nuzum

- Traction Skins
    - [Available Skins](#)
    - [Traction Skins](#)
    - [Changing Skins](#)
    - Customizing Skins
      - [Customizing Skin Settings](#)
      - [Using the Skin Stylesheet Editor](#)
    - [Search Skin - Configuring an External Search Engine](#)
    - [RSS and Atom - Configuring Feeds from Traction](#)
  - [Trackback](#)
    - [Trackback - In and Out](#)
    - [Trackback InboundSetup](#)
    - [Trackback - Sending Trackback Pings from Traction](#)
  - [Audit Trail](#)
  - [Email Reply Templates](#)
  - [Project Templates](#)
  - [Changing Perspective](#)
  - [Topics vs. Relationships](#)
  - [Backup and Maintenance](#)
- 

## ***Installing Instant Publisher***

Doc139: March 22, 2008 4:04 PM, Posted by Documentation Importer

### **Installing the Traction Instant Publisher (TIP)**

Click on the *My Account* link from the *Tools* menu in your Traction browser. This takes you to your *My Account / Preferences* page.

There is a 3-step process to install the Instant Publisher:

1. Installation
2. Configuration (server, user name, password)
3. Replacing browser launched Add Article, Comment, and Edit forms.

### ***Installation***

Under Version 2, click where it says *Click here to configure the Traction Instant Publisher v2*.

**admin** (2) **personal setup**

Setup | Server | Project ▼ | User **admin (Chris Nuzum)** ▼

1 Personal Info | 2 **Preferences** | 3 Password | 4 Permissions

⏮ ⏪ ⏩ ⏭

### Instant Publisher Preferences

The Traction Instant Publisher is currently only available to users running Windows 2000 or later.

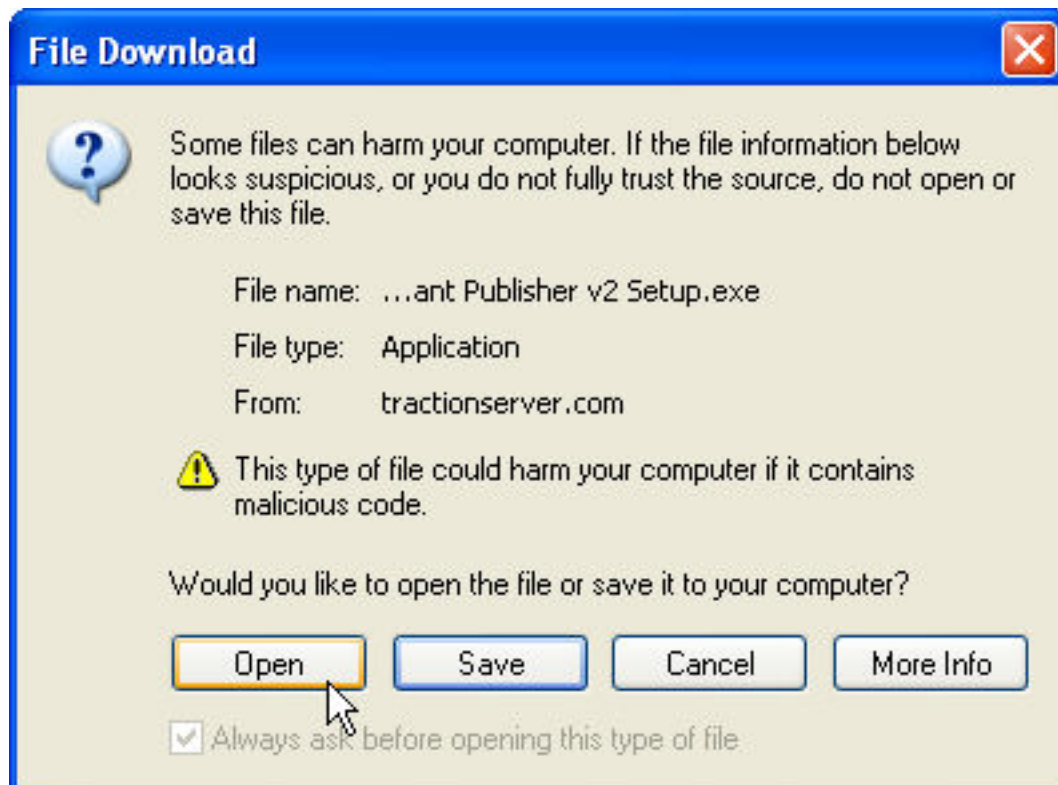
#### Version 2

[Click here to install the Traction Instant Publisher v2.](#)

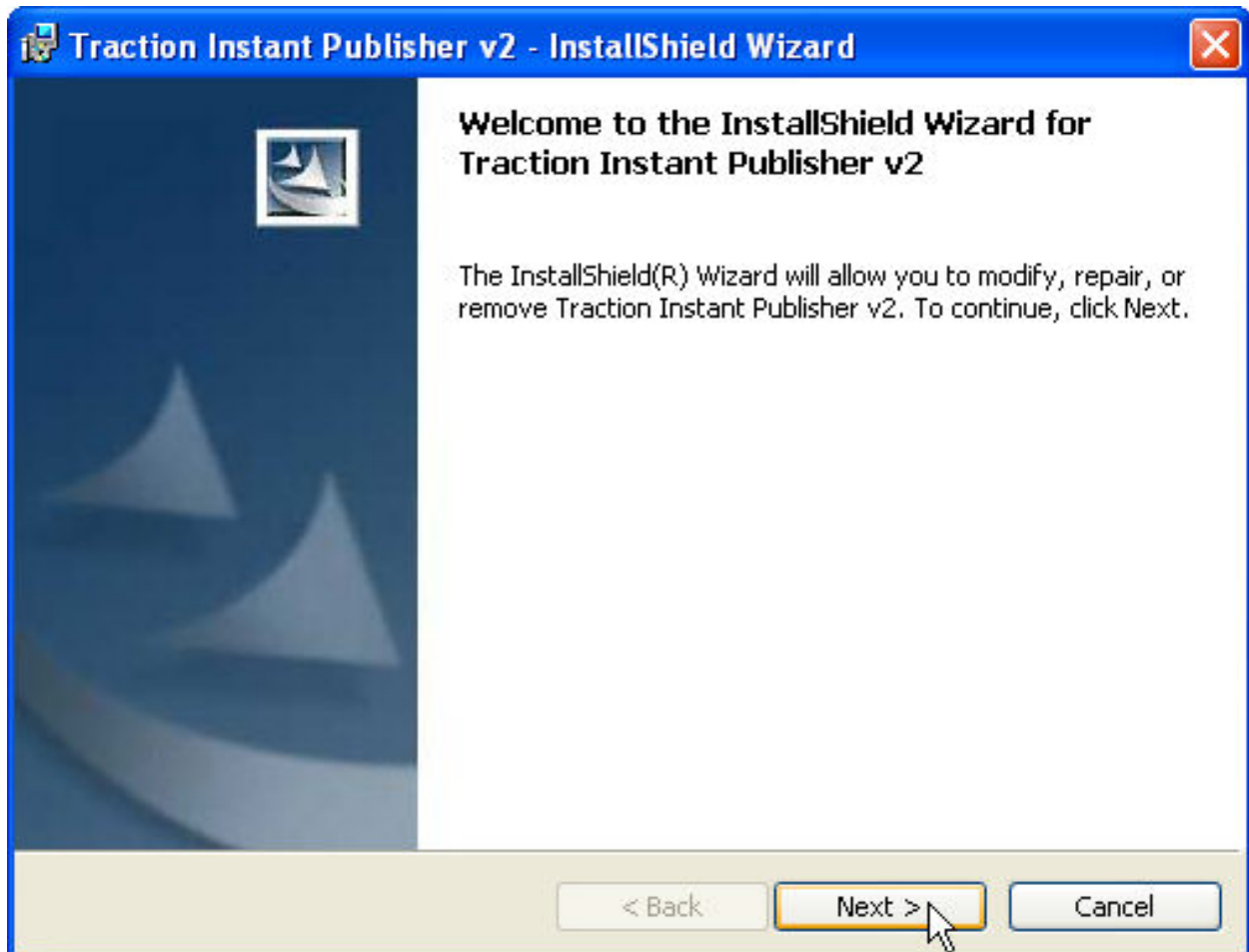
[Click here to configure the Traction Instant Publisher v2 for this Traction Server.](#)

- ☐ Where possible, use the Instant Publisher v2 instead of the HTML forms for editing articles.  
This setting only applies to your current browser.

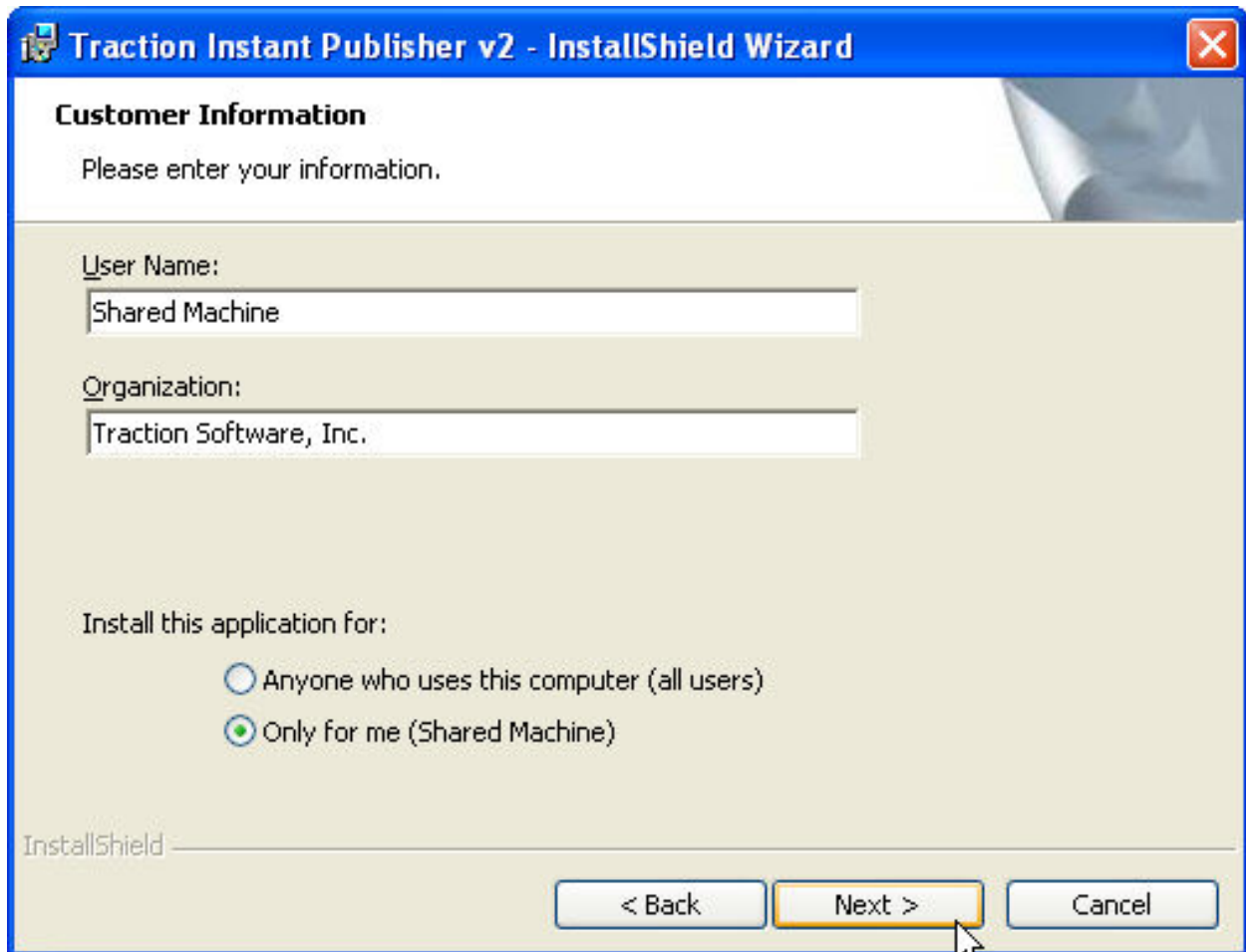
Click **Open** on the **File Download** menu.



The install files will download and the installer will start up. Now click **Next**.



The following form should be filled in. If there is an option, select to install *Only for me*, then click *Next*.



**Traction Instant Publisher v2 - InstallShield Wizard**

**Customer Information**

Please enter your information.

User Name:  
Shared Machine

Organization:  
Traction Software, Inc.

Install this application for:

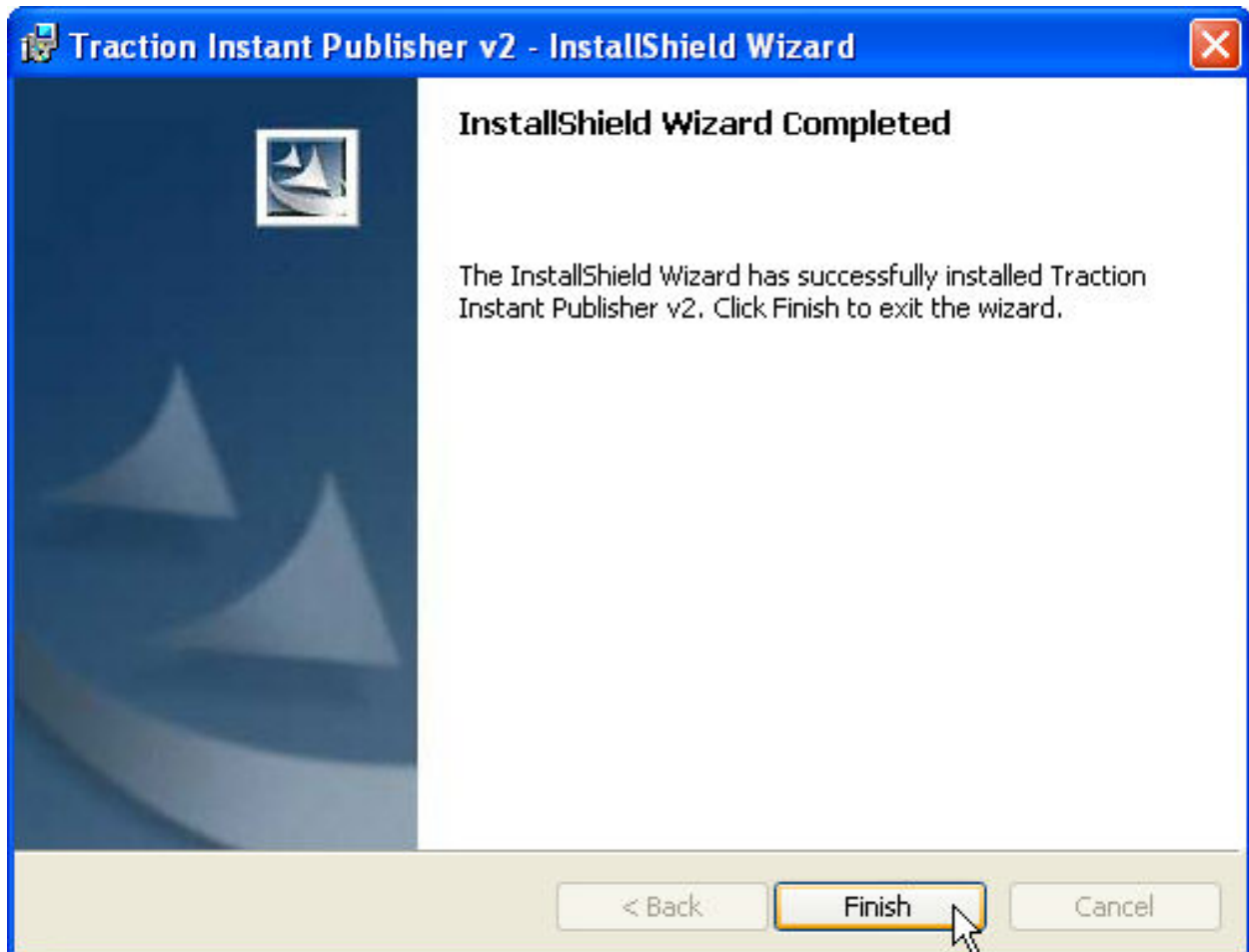
☐ Anyone who uses this computer (all users)

☒ Only for me (Shared Machine)

InstallShield

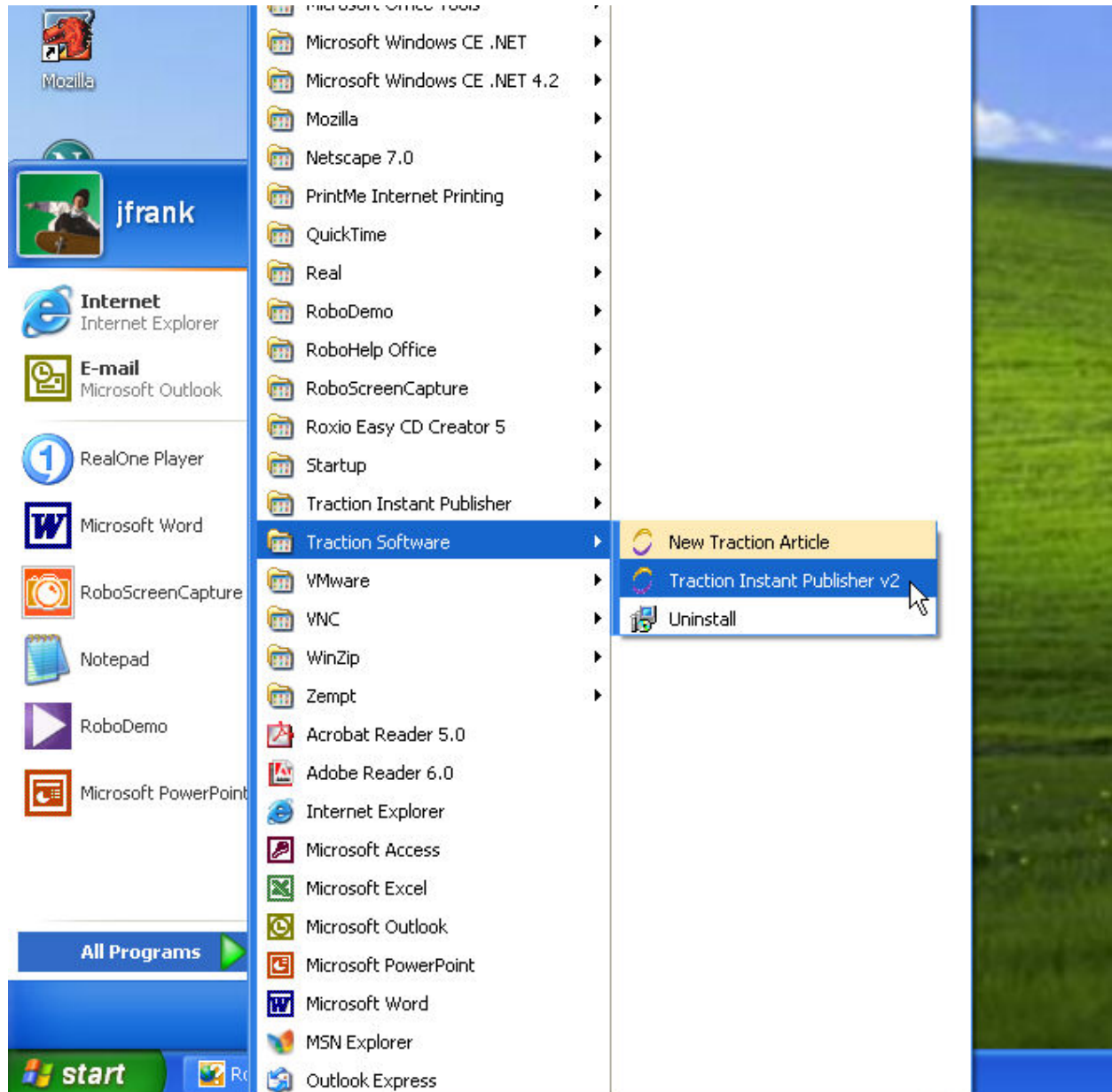
< Back   Next >   Cancel

The wizard will tell you that installation is complete. Click *Finish*.

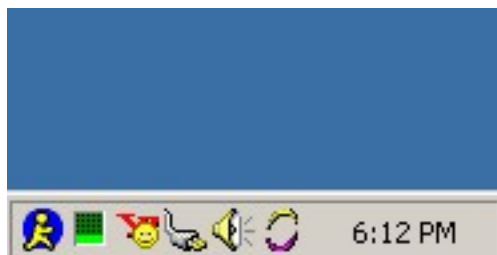


The Traction Instant Publisher is now installed and configured to publish to your server.

Now, to launch the publisher, you can navigate to *Start / Programs / Traction Software / Traction Instant Publisher V2*



The Traction icon will appear in your system tray





## Configuration (Server, user name, password)

After installation, return to My Account | Preferences to configure the Instant Publisher. Click on the second line, as in the below image:

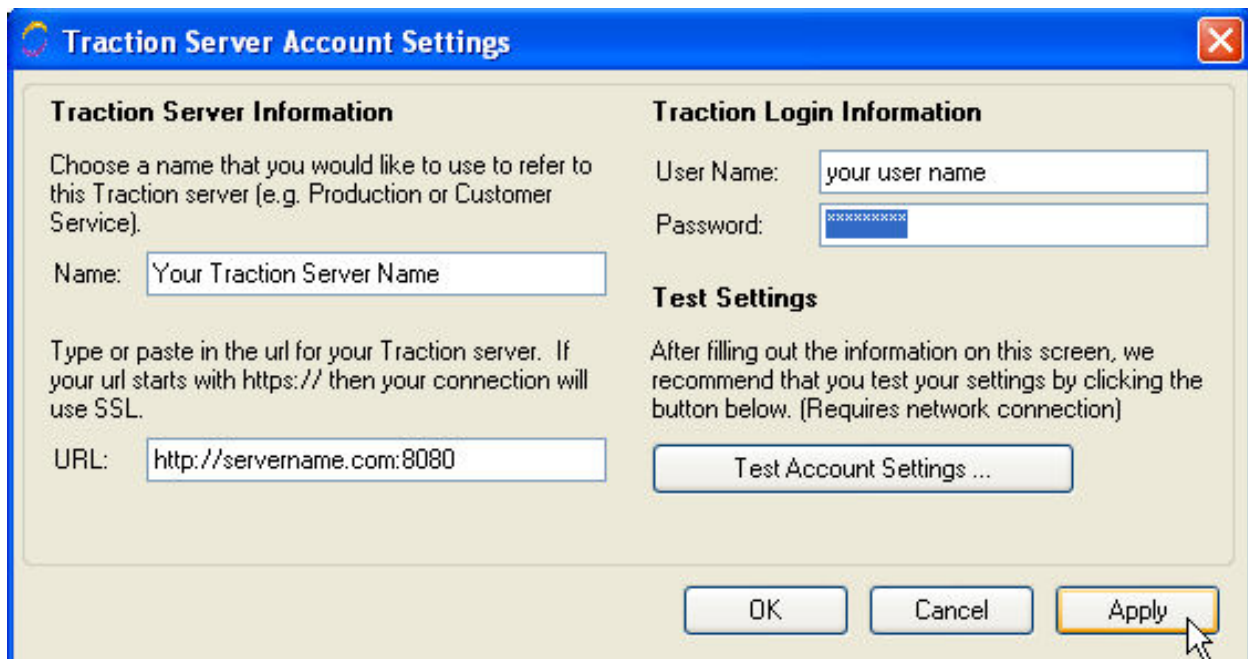
### Version 2

*Click here to install the Traction Instant Publisher v2.*

*Click here to configure the Traction Instant Publisher v2 for this Traction Server.*

- ☐ *Where possible, use the Instant Publisher v2 instead of the HTML forms for editing articles. This setting only applies to your current browser.*

This will launch the Instant Publisher settings window with you server settings and user name applied.



Simply add your password and then click Apply. You can click Test Account Settings to verify that it is configured properly.

As of Instant Publisher Version 2.1, an Advanced button will also appear on this form. It is used when the URL used to contact the server differs from the URL with which the server identifies itself. In these cases, it is now possible to specify the mapping manually. *For example, you might contact a server via HTTPS but the server may identify itself as running on HTTP.*

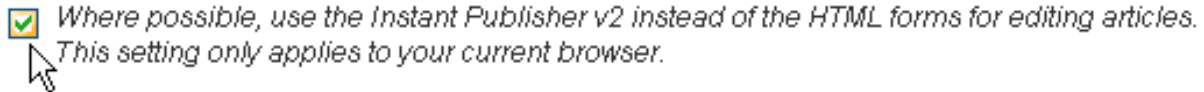
## Configuring your Instant Publisher for another Server

If you work with multiple Traction Servers, you can repeat this step on each server. The Instant Publisher has a menu where you select the server to which you want to publish.

***Using the TIP instead of the HTML Add Article, Comment, and Edit forms.***

The Instant Publisher can be configured as a substitute for the HTML *Add Article*, *Edit Article* *Consists of a Title, Text, Attachments and Labels* and *Comment* forms which you have learned about in previous sections of the User Guide. This will give you a WYSIWYG editor and a richer comment interface with the full capabilities of TIP V2.

To configure for Edit and Comment, click the *My Account* link. The *My Account* page will open to the *Preferences* page. In the Instant Publisher preferences section, check the box next to the text that says:



Then click the *Apply* icon in the upper right or bottom of the screen.

## Available Skins

Doc18: March 22, 2008 3:46 PM, Posted by Documentation Importer

### What Skins are Provided with Traction?

While a number of skins are provided with Traction, the core set of skins is:

- *Mexico* for interactive use. This is a full-featured skin that supports extensive customization.
- *RSS* and *Atom* for syndication.
- *Simple* for low-bandwidth devices like cell phones or blackberry devices and text-only web browsers like Lynx. This skin is automatically served to known devices detected based on their useragent identifier.
- *search*, which is served automatically to enterprise and web search engines.
- *mbox* for exporting mailbox contents to Traction.

A number of other skins are also available and can be selected:

- *Ocean*, *Earth*, *2col* and *3col* are all in the same family as *Mexico*, and support many of the same features as *Mexico*, but may have less customization options.
- *Modern* skin is an older skin that has been re-tooled for Release 3.7, but has no calendar, a different navigation interface (not located in a left column), and is not as readily customizable.
- *Quick* is a basic blog skin whose design was contributed by a Traction customer. It uses CSS aggressively for its layout, and it makes an attempt to use user-centric as opposed to program-centric terminology. It explicitly limits the capabilities of various views to the bare minimum, and where other skins may provide multiple ways of accomplishing certain operations, the quick skin strives to provide only one way, in an effort to keep things simpler and less overwhelming for users.

## Traction Skins

Doc300: March 22, 2008 4:23 PM, Posted by Documentation Importer, Edited by Greg Lloyd

Traction ships with a variety of interfaces called skins. Each skin has its own look and feel. Some skins have features that make them suitable for a specialized use, others may be developed and installed as plug-ins from Traction Software, your own company or other Traction TeamPage users. Your administrator has setup a default skin for all Visitors and new users. You can override that setting in the [Personal Preferences](#) / [Preferences](#) tab, see [Personal Setup Guide](#) or [Server Setup Guide](#). You can also quickly switch between skins using a Rapid Selector command, see [Changing Skins with the Rapid Selector](#). This section first describes the available skins, then describes how to change skins.

See [Available Skins](#)

Blackberry, Treo and other mobile use - see Simple Skin in [Available Skins](#)

[Skin Preference](#)

[Customizing Skin Settings](#)

[Using the Skin Stylesheet Editor](#)

[Changing Skins](#)

[Changing Skins with the Rapid Selector](#)

[Navigating the Interface - In the Mexico Skin](#)

[Advanced Features and Concepts](#)

[Search Skin - Configuring an External Search Engine](#)

## Changing Skins

Doc26: March 22, 2008 3:47 PM, Posted by Documentation Importer, Edited by Greg Lloyd

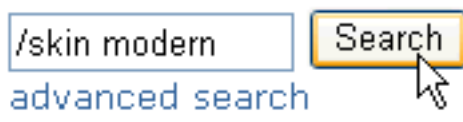
Changing Skins

### Changing Skins

You can quickly change the skin selected in your web browser by typing:

`/skin skinname`

Into the Search box. Replace *skinname* with the skin you desire. The following example changes to the modern skin:



You can switch back to your login default skin by typing `/skin default`

### Changing your Default Skin

See the [Skin Preference](#) help topic.

### Are you stuck in a skin?

Some skins (e.g. search, mbox) are not designed to be used with interactive web browsers. If you specify one of these skins using the Rapid Selector, you can get out in one of two ways:

1. Clear cookies in your browser. This "nuclear option" will remove all preference settings.
2. Add the following text to the URL of any view you are looking at in Traction: `&skin=default`

This will cause the next page generated to be in your default skin. When that page displays, enter `/skin default`

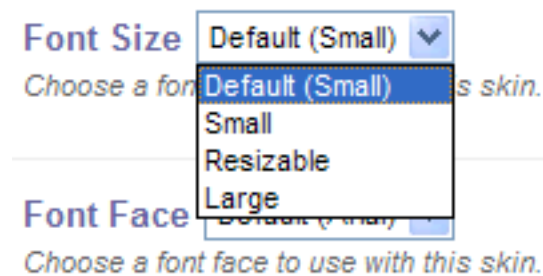
into the search box and press the search button to reset your cookie.

3. Go to <https://teampage.tractionsoftware.com/rs/skin%20default> (using your TeamPage server's URL followed by `/rs/skin%20default`)

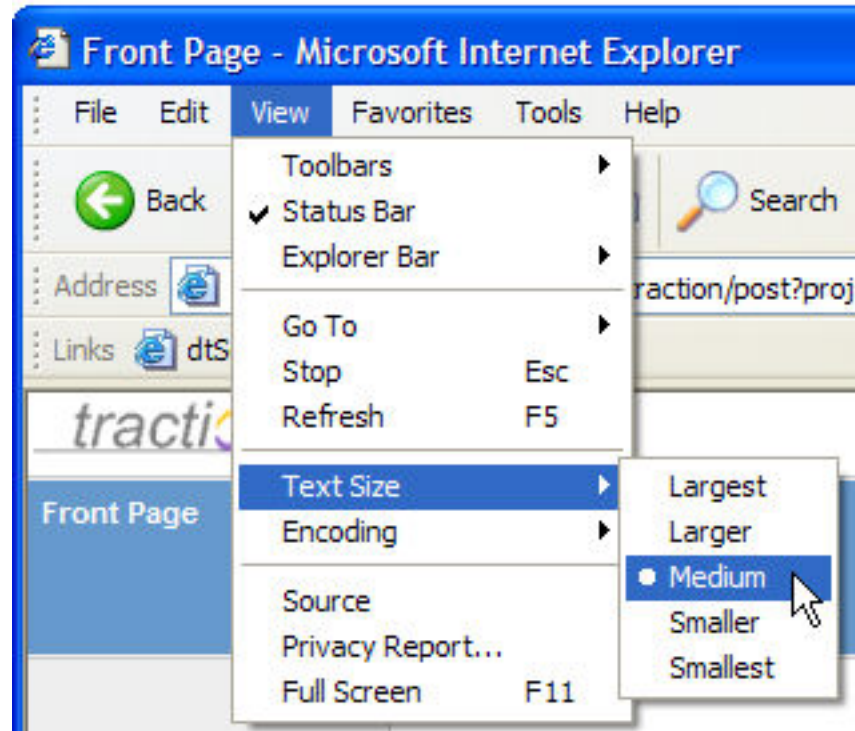
## Customizing Skin Settings

Doc56: March 22, 2008 3:53 PM, Posted by Documentation Importer, Edited by Greg Lloyd

### Font Size



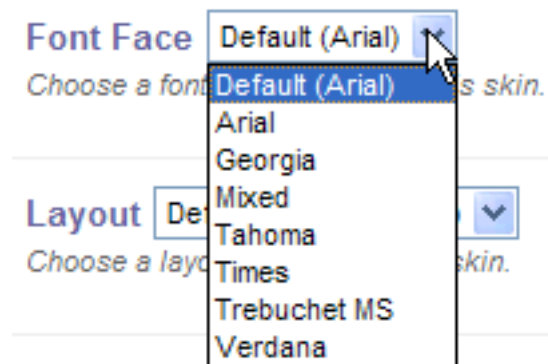
If you want to be able to use Internet Explorer's resize controls to change the font size,



you should specify the *Resizable* option.

## Font Face

This setting lets you control the font used.



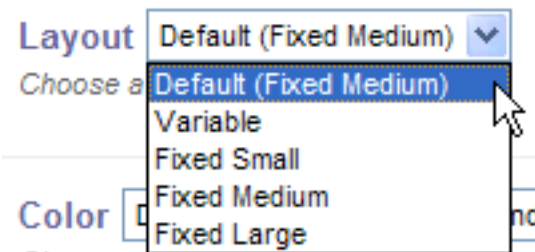
The sample below shows the Ocean skin with the Trebuchet font.



## Layout

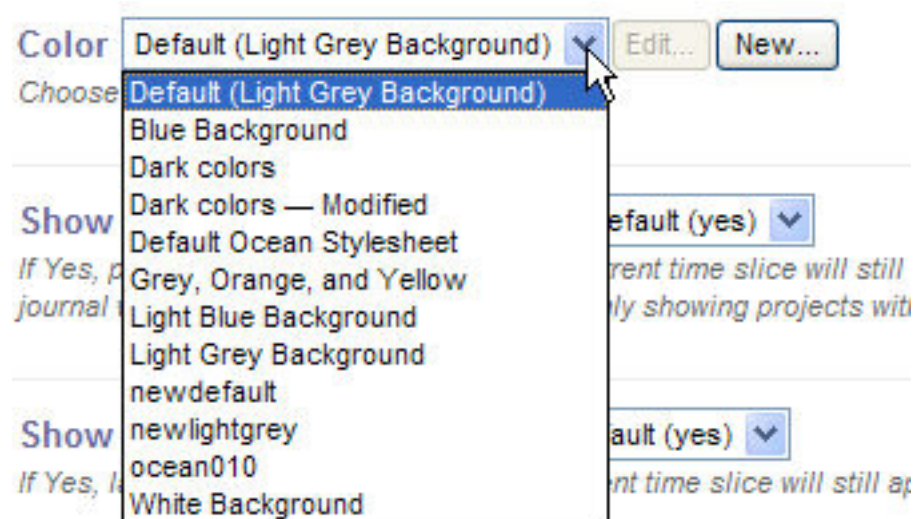
This option controls the width of the sidebars. You can choose from three fixed sizes, or Variable. If you use Variable, the sidebar uses JavaScript to adjust the width after the page is rendered. This can result in a slight visible "jump" as the layout snaps into place.





## Color

You can choose any predefined color scheme, or create your own with the [Using the Skin Stylesheet Editor](#). To edit an existing stylesheet, click *Edit*; to create a new one, click *New*.



## Show Projects with Zero Activity

Show Projects with Zero Activity

*If Yes, projects, with no activity during the current time slice will still appear in the navigation section. In a journal with many projects, we recommend only showing projects with activity.*

Normally projects with no activity are listed in the left sidebar of the Front Page. Projects with activity show the number of articles in the time period in parenthesis.

Projects  
admin  
CI  
Comment  
MarketResearch (33)  
ProductAlpha (16)  
Public

If you don't want to see projects with no activity during the time period, set this control to *No*; only the active projects will be listed.

Projects  
MarketResearch (33)  
ProductAlpha (16)

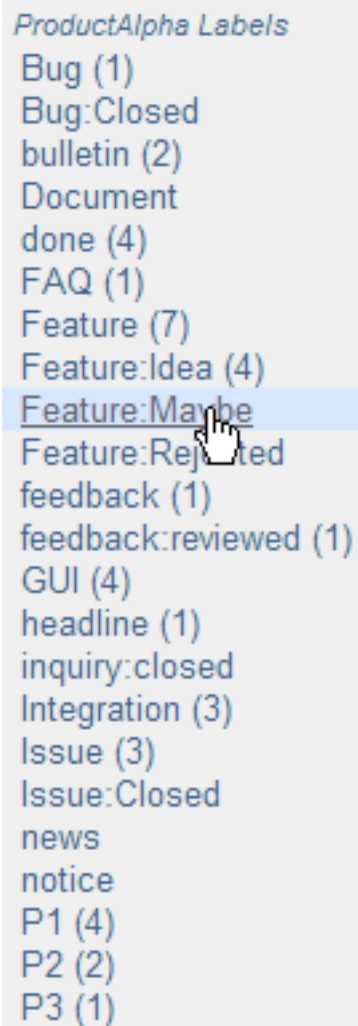
### **Show Labels with Zero Activity**

Show Labels with Zero Activity

*If Yes, labels, with no activity during the current time slice will still appear in the navigation section.*

The newspaper normally shows labels with no activity.





To show only active labels, change this to *No*.

*ProductAlpha Labels*

Bug (1)  
bulletin (2)  
done (4)  
FAQ (1)  
Feature (7)  
Feature:Idea (4)  
feedback (1)  
feedback:reviewed (1)  
GUI (4)  
headline (1)  
Integration (3)  
Issue (3)  
P1 (4)  
P2 (2)  
P3 (1)  
todo (9)  
V2 (6)  
V2\_1 (2)

**Use Sections**

**Use Sections**  

*Controls whether you get standard Traction section behavior or simplified blog behavior*

Normally Traction uses sections to organize the Front Page and Newpage. The following Newpage shows sections for Headlines, Open Bugs, Recent Articles, Recent To-Do, Recent Done, and Bulletins. For information on defining sections, see [Changing Front Page and Newpage Section Layouts](#).

traction

Front Page > ProductAlpha > Newpage

advanced search

Search

Front Page

ProductAlpha

Newpage

Headlines

Open Bugs

Recent Articles

Recent To-Do

Recent Done

Bulletins

ProductAlpha Labels

Bug (1)

bulletin (2)

done (4)

FAQ (1)

Feature (7)

Feature Idea (4)

feedback (1)

feedback:reviewed (1)

GUI (4)

headline (1)

Integration (3)

Issue (3)

P1 (4)

P2 (2)

P3 (1)

todo (9)

V2 (6)

V2\_1 (2)

Managing and tracking product features

Headlines

PRODUCTALPHA

Product Alpha V2 Requirements

The new Traction Instant Publisher or TIP V2 (also known by code name as Alpha) is a total rewrite of our V1 product. The new TIP extends rich text editing, screen capture, and file attachment to the browser based Add, Edit, and Comment forms. The features are detailed here and a slide deck from the Phase 1 review is attached

@1 ...

ProductAlpha74 | Posted by Einstein | June 17, 2003 | 12:18:31 PM EDT | # | 2 Comments

Open Bugs

DLL Install Errors on TIP V1

inBox116 | Posted by Visitor | June 17, 2003 | 11:17:40 AM EDT | # | 0 Comments

Recent Articles

A concept paper for the new product

ProductAlpha102 | Posted by Einstein, Edited by Chris Nuzum | November 25, 2003 | 2:24:40 AM EST | # | 0 Comments

Prioritize V2 Features for release by end December

ProductAlpha97 | Posted by Jordan Frank | November 11, 2003 | 3:06:05 AM EST | # | 2 Comments

Product Management Use Case Movie

ProductAlpha95 | Posted by Jordan Frank | November 11, 2003 | 12:16:33 AM EST | # | 0 Comments

Spell Checker

ProductAlpha90 | Posted by Einstein | September 30, 2003 | 11:58:46 PM EDT | # | 0 Comments

RSS Plug In for Newsgator

ProductAlpha88 | Posted by Jordan Frank, Edited by Einstein | September 30, 2003 | 11:53:31 PM EDT | # | 2 Comments

re: TIP Editor

ProductAlpha86 | Posted by Jordan Frank | September 30, 2003 | 11:52:16 PM EDT | # | 1 Comment

Product Alpha V2 Requirements

ProductAlpha74 | Posted by Einstein | June 17, 2003 | 12:18:31 PM EDT | # | 2 Comments

Launch from Browser

ProductAlpha73 | Posted by Einstein | June 17, 2003 | 11:58:57 AM EDT | # | 3 Comments

Paragraph Level Label picker on TIP Form

ProductAlpha65 | Posted by Jordan Frank | June 17, 2003 | 11:03:22 AM EDT | # | 1 Comment

TIP Form GUI

ProductAlpha64 | Posted by Jordan Frank | June 17, 2003 | 10:23:51 AM EDT | # | 1 Comment

Read More Recent Articles...

Recent To-Do

DLL Install Errors on TIP V1

A concept paper for the new product

Spell Checker

Launch from Browser

Paragraph Level Label picker on TIP Form

Search from the Desktop

Screen Capture Tool

TIP Editor

IE, Outlook, and Word Application Integration

Recent Done

TIP Form GUI

Installation Feedback

IE, Outlook, and Word Application Integration

Bulletins

Product Management Use Case Movie

re: TIP Editor

Shortcuts

Getting Traction

Executive Summary Email Digest

Traction Data Architecture

Traction TeamPage Spec Sheet

Change Tracking Within Article Example

< 2003 >

Q1 Jan Feb Mar

Q2 Apr May Jun

Q3 Jul Aug Sep

Q4 Oct Nov Dec

Show All Years

Show current year

Add New Article

Show Collector

Sign Out

My Account (admin)

Project Setup

Server Setup

Alpha Dashboard

Alpha PRD

All Features

V2 ToDo

V2+ ToDo

Unallocated ToDo

Feature Ideas

RSS RSS feed

Click here to learn more

Atom Atom feed

Click here to learn more

Shared Files for ProductAlpha

Recent Changes:

Traction SCW (QT & 31.04).doc

Jan 31, 2005 3:18:19 PM, by admin

Firefox Setup 1.0PR.exe

Oct 26, 2004 2:22:22 PM, by admin

infoicon.gif

Aug 11, 2004 1:05:41 PM, by admin

infoicon.png

Aug 11, 2004 1:05:39 PM, by admin

Traction changes.doc

Aug 9, 2004 5:32:07 PM, by admin

feedback • contact us • help

Copyright © 2002-2005 Chris Nuzum

Powered by traction



Traction supports a simple "blog mode". If you use this control to turn off sections, the Newpage is organized instead by "Recent Articles" and "Recent Comments".

[illegible]

## Recent Articles Size

Recent Articles Size Default (large) ▼

Recent Articles<sub>min</sub>

large  
medium  
small


This lets you control the size of the Recent Articles portlet when sections are turned off.

- **Large** shows title, lead paragraph, and entry details.
- **Medium** shows title and entry details.
- **Small** just shows title.

## Recent Articles Min and Max

Recent Articles<sub>min</sub>   <sub>max</sub>

☒ Use Default Value (0, 15)

 If necessary, Traction will pull articles from previous time periods to satisfy the minimum.

When sections are disabled, this controls the minimum and maximum number of recent articles to display.

## Recent Comments Size

Recent Comments Size Default (medium) ▼

Recent Comments<sub>min</sub>

large  
medium  
small

☒ Use Default Value (0, 15)

When sections are disabled, this lets you control the size of the Recent Comments portlet.

## Recent Comments Min and Max

Recent Comments<sub>min</sub>   <sub>max</sub>

☒ Use Default Value (0, 15)

When sections are disabled, this controls the minimum and maximum number of recent comments to display.

## Shared Project Folder Link

Shared Project Folder Link  ▼

*Views including only one project include the shared project folder portlet. This controls whether a link to the project shared folder will be displayed in the shared project folder portlet.*

This lets you control whether the link to the shared files directory appears. See the illustration below.

## Shared Project Folder Recently Modified File List

Shared Project Folder Recently Modified File List  ▼

*Views including only one project include the shared project folder portlet. This controls whether a link to the project shared folder will be displayed in the shared project folder portlet.*

This lets you control whether the most recently modified shared files are listed in the project's sidebar. The number of files displayed is controlled by the setting [Number of Files to Show in Shared Folder Portlet](#).

Normally the sidebar displays a link to the current project's *shared files* folder. This lets you remove that link.

Showing both (default)	Only showing Link	Only showing list	Showing neither link nor list

advanced search

Search

< 2003 >

Q1	Jan	Feb	Mar
Q2	Apr	May	Jun
Q3	Jul	Aug	Sep
Q4	Oct	Nov	Dec

Show All Years

Show current year

Add New Article

Show Collector

Sign Out

My Account (admin)

Project Setup

Server Setup

Alpha Dashboard

Alpha PRD

All Features

V2 ToDo

V2+ ToDo

Unallocated ToDo

Feature Ideas

RSS RSS feed

Click here to learn more

Atom Atom feed

Click here to learn more

Shared Files for ProductAlpha

Recent Changes:

Traction SOW (IQT 8.31.04).doc

Jan 31, 2005 3:18:19 PM; by admin

Firefox Setup 1.0PR.exe

Oct 26, 2004 2:22:22 PM; by admin

infoicon.gif

Aug 11, 2004 1:05:41 PM; by admin

infoicon.png

Aug 11, 2004 1:05:39 PM; by admin

Traction changes.doc

Aug 9, 2004 5:32:07 PM; by admin

advanced search

Search

< 2003 >

Q1	Jan	Feb	Mar
Q2	Apr	May	Jun
Q3	Jul	Aug	Sep
Q4	Oct	Nov	Dec

Show All Years

Show current year

Add New Article

Show Collector

Sign Out

My Account (admin)

Project Setup

Server Setup

Alpha Dashboard

Alpha PRD

All Features

V2 ToDo

V2+ ToDo

Unallocated ToDo

Feature Ideas

RSS RSS feed

Click here to learn more

Atom Atom feed

Click here to learn more

Recent Changes:

Traction SOW (IQT 8.31.04).doc

Jan 31, 2005 3:18:19 PM; by admin

Firefox Setup 1.0PR.exe

Oct 26, 2004 2:22:22 PM; by admin

infoicon.gif

Aug 11, 2004 1:05:41 PM; by admin

infoicon.png

Aug 11, 2004 1:05:39 PM; by admin

Traction changes.doc

Aug 9, 2004 5:32:07 PM; by admin

advanced search

Search

< 2003 >

Q1	Jan	Feb	Mar
Q2	Apr	May	Jun
Q3	Jul	Aug	Sep
Q4	Oct	Nov	Dec

Show All Years

Show current year

Add New Article

Show Collector

Sign Out

My Account (admin)

Project Setup

Server Setup

Alpha Dashboard

Alpha PRD

All Features

V2 ToDo

V2+ ToDo

Unallocated ToDo

Feature Ideas

RSS RSS feed

Click here to learn more

Atom Atom feed

Click here to learn more

Shared Files for ProductAlpha

advanced search

Search

< 2003 >

Q1	Jan	Feb	Mar
Q2	Apr	May	Jun
Q3	Jul	Aug	Sep
Q4	Oct	Nov	Dec

Show All Years

Show current year

Add New Article

Show Collector

Sign Out

My Account (admin)

Project Setup

Server Setup

Alpha Dashboard

Alpha PRD

All Features

V2 ToDo

V2+ ToDo

Unallocated ToDo

Feature Ideas

RSS RSS feed

Click here to learn more

Atom Atom feed

Click here to learn more

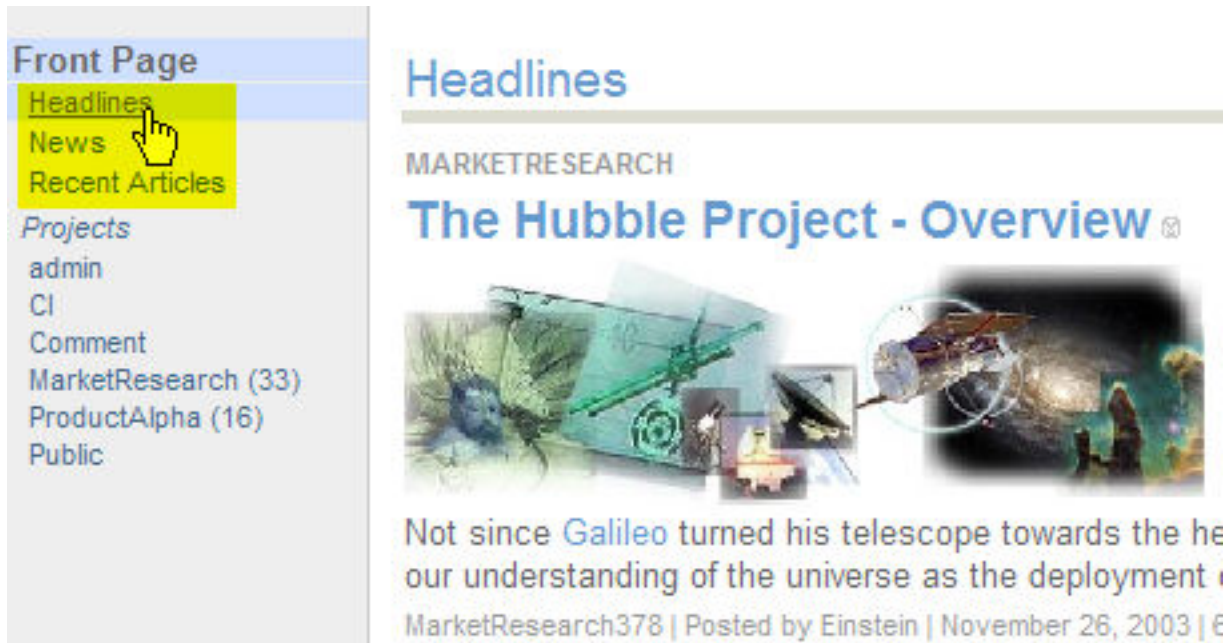


## Display/Hide Frontpage Section Navigation Links in Sidebar

This setting controls whether Frontpage section navigation links, such as the [Headlines](#) section for a Traction server, are displayed in the sidebar. The classic behavior is to display these links only on the front page, but some users prefer to have them on every page, especially on the front page itself, but some users prefer to never have them.



The sections that are displayed on the front page can also be listed in the sidebar. This allows quick navigation to a view of all the articles in the corresponding section.



Normally, these links are displayed only on the front page.

You can have them repeated on every page, if you like, by choosing the option *Always Display Links*. If you choose this option, all views will repeat the front page section links. Here's a single-article view showing the Front Page links.

Front Page > MarketResearch > 347

### Front Page

[Headlines](#)

[News](#)

[Recent Articles](#)

### MarketResearch

#### Newspage

[Recent Articles](#)

[Headlines](#)

[News](#)

## Traction Software R

MarketResearch347 (#) | [TrackBack](#) |

Posted by Jordan Frank | Edited by Chr

 1 Attachment |  1 Comment



Choosing *Never Display Links* will prevent these links from displaying on all views, in which case even the front page will not display the links.



## Project Navigation Link Display Type

### Project Navigation Link Display Type

Some users will want to change when links to a project are displayed. The classic behavior for this skin is to display the links as a list on the front page; or to keep the display tighter when in a project view, a drop-down menu can be displayed instead.

Default (List - Front Page Only) ▼

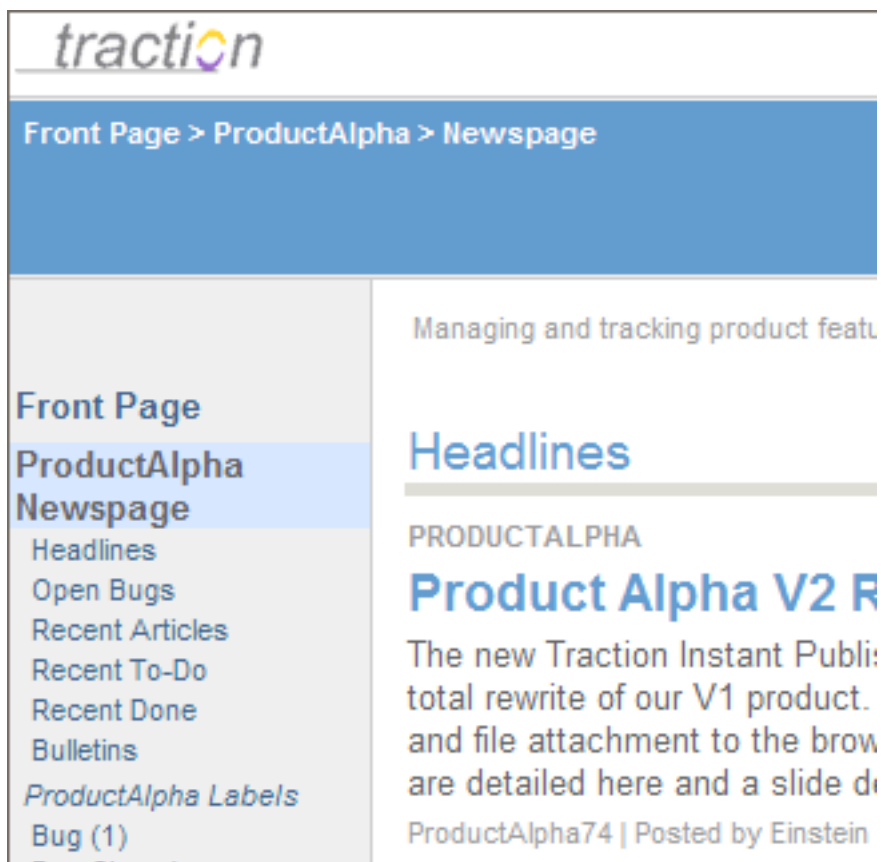
- Default (List - Front Page Only)
- Drop-Down Menu - All Views
- List - Front Page Only
- List - All Views

How they are displayed. The classic for navigation, that list can be displayed on projects, a drop-down menu -- or "selector" --

This setting lets you control how users can navigate between projects. The default is to show a list of projects only on the front page;



Other pages do not show the project list by default.



You can cause all pages to show the project list by choosing *List - All Views*. The project list will appear between the Front Page link and the Newspaper information.

traction

Front Page > ProductAlpha > Newspaper

Front Page

Projects
admin
CI
Comment
MarketResearch (33)
ProductAlpha (16)
Public

ProductAlpha
Newspage
Headlines
Open Bugs
Recent Articles
Recent To-Do
Recent Done
Bulletins
ProductAlpha Labels
Bug (1)
Bug: Closed
bulletin (2)
Document
done (4)
FAQ (1)

Managing and tracking product fea

Headlines

PRODUCTALPHA

## Product Alpha V2 I

The new Traction Instant Pub  
total rewrite of our V1 product  
and file attachment to the bro  
are detailed here and a slide c  
ProductAlpha74 | Posted by Einstei

Open Bugs

### DLL Install Errors on TIP V'

InBox116 | Posted by Visitor | June

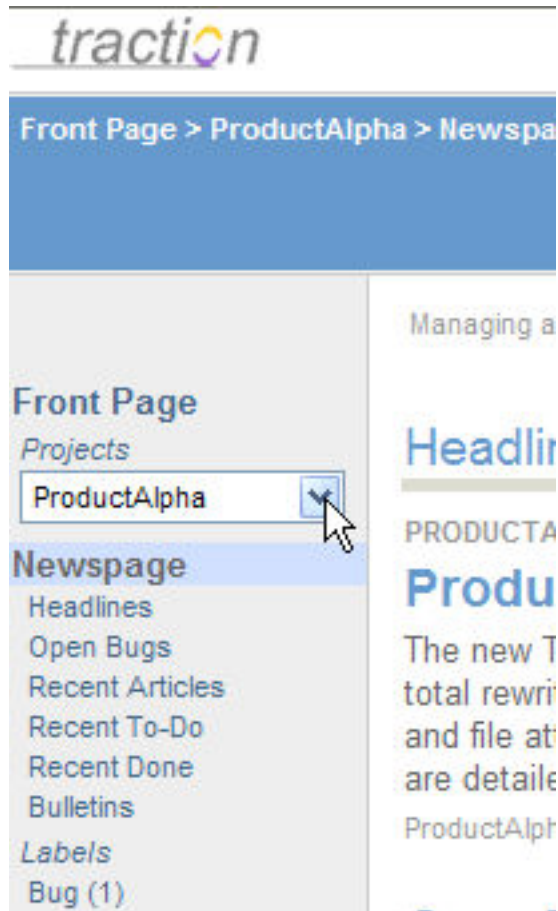
Recent Articles

### A concept paper for the ne

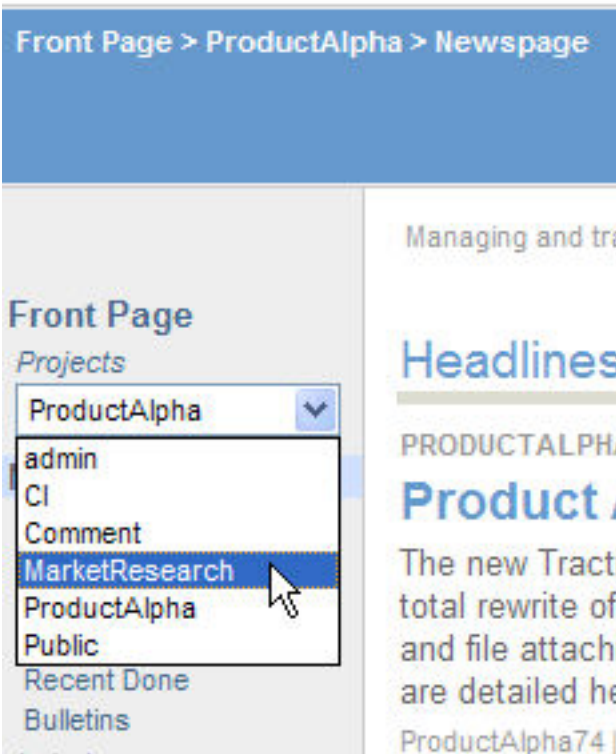
ProductAlpha102 | Posted by Einste  
0 Comments

Alternatively, you can have the project list display as a drop-down menu in all views.

Page 29 of 60





This interface is simple and clean. When the user selects a different project from the menu and clicks, the page instantly switches to that project.



## Hide/Show Article Toggle

Hide/Show Article Toggle

*Shows a hide  icon, which changes to a show  icon when clicked, enabling individual articles in a multi-article display to be hidden.*

Normally a small hide/show icon appears above every article.



Show Brief content

Search Filter Active

November 26, 2003

## The Hubble Project - Overview

MarketResearch378 (#) | TrackBack | November 26, 2003 | 6:08:10 PM EST

Posted by Einstein

Cross References | 2 Attachments | 1 Comment

headline  
market



Not since Galileo turned his telescope towards the heavens in 1610 has any event so changed our understanding of the universe as the deployment of the Hubble Space Telescope. 01 ...

### Article Comments

see MarketResearch378: The Hubble Project - Overviewfoo  
[Chris Nuzum, MarketResearch1496, May 5, 2005, 10:19:54 AM EDT]

November 25, 2003

## re: Latest RSS Trends and Weblog Takeoff

MarketResearch361 (#) | TrackBack | November 25, 2003 | 12:50:58 AM EST

Posted by Jordan Frank

Cross References

Clicking this icon collapses the article and reverses the direction of the icon.



Show **Brief** content

Q Search Filter Active ? x

November 26, 2003

The Hubble Project - Overview v

November 25, 2003

^

## re: Latest RSS Trends and Weblog Takeoff 0

MarketResearch361 (#) | TrackBack | November 25, 2003 | 12:50:58 AM EST  
 Posted by Jordan Frank  
+ Cross References

Blogs and customers this quarter are whaling about RSS but dont necessarily know what all the hype is about. 0

[SallySu, MarketResearch342.01, September 29, 2003, 1:16:58 AM EDT]

For additional information, see [MarketResearch63: Weblogs gain consumer ground, graze enterprise](#) 01 0

+ Show all comments on MarketResearch342: Latest RSS Trends and Weblog Takeoff

Clicking the icon again expands the article.

## Inline Comments and Reclassifications

Inline Comments and Reclassifications Default (yes) v

*If yes, comment forms will be inserted inline and submitted without requiring a page reload. Actions and reclassification will also avoid page reloads when possible.*

Normally when choosing the option to comment on a paragraph from the context menu:

In [MarketResearch341: InfoWorld TechWatch: RSS hype cycle](#) - Mark Jones comments about a tech dirt comment. He says there is hype and where there is initial hype there is confusion. Its our job to make clarity for the market and deliver value with RSS feeds. 02 0

Nevertheless, Word from [MarketResearch337: McGee - RSS Feed is a Must](#). So some folks won't be able to read it. 03 0

And to our customers (see [MarketResearch342: Latest RSS Trends and Weblog Takeoff](#)) that reading is not enough, they want to publish an entry in their own enterprise weblog too. 04 0

Paragraph

- ||| Action
- + Change Labels
- + Collect
- + Comment v
- + Personal Note

A comment form is displayed inline.

In [MarketResearch341: InfoWorld TechWatch: RSS hype cycle](#) - Mark Jones comments about a tech dirt comment. He says there is hype and where there is initial hype there is confusion. Its our job to make clarity for the market and deliver value with RSS feeds. 02

Nevertheless, Word from the experts is: [MarketResearch337: McGee - RSS Feed is a Must](#). So some folks wont even read a weblog if there is no RSS. 03

If you set this option to *No*, the comment window will pop up instead.

## Latest RSS Trends and Weblog Takeoff

MarketResearch342 (#) | TrackBack | September 29, 2003 | 1:16:58 AM EDT

Posted by SallySu

Cross References | 5 Comments

convergence



Report  
weblog

<	2003			>
Q1	Jan	Feb	Mar	
Q2	Apr	May	Jun	
Q3	Jul	Aug	Sep	
	Oct	Nov	Dec	

Blogs and  
what all th

For add  
graze e  
[Jordan

Hello V  
[Guest

In MarketR  
comments  
hype there  
RSS feeds

Neverthele  
Must. So s

And to our  
to publish

try try a  
[Chris

comm  
[Chris

try this  
[Chris

The net of  
simplify th

http://192.168.123.132:8081 - Add Comment on MarketResearch...

Add Comment on  
MarketResearch342.02

Choose Draft... Load Draft

Project: MarketResearch

Labels: Choose

Edit Attachments (0)  
Edit Relationships (0)

Title: re: Latest RSS Trends and Weblog Takeoff

B I U ABC [List Icons] Paragraph

[Rich Text Editor Area]

[Bottom Icons] HTML

Simplify HTML

Cancel Save Draft Submit

Done Internet

## Stylesheet Overrides

## Stylesheet Overrides

*Use with Caution! This block of text will be inserted within a `<style type=text/css>` tag in each view generated. It can be used to override any styles specified in the stylesheets. Styles should appear on separate lines.*

*Here are some useful examples:*

**`.defaultlink { color: #0000aa; text-decoration: underline }`**

*Makes Traction cross reference links appear blue and underlined*

**`.searchhitbrief { background-color: #ffffff }`**

*In the modern theme, makes the background color of search hits white, with no highlight (also searchhitfull, topichitbrief, topichitfull).*

☒ Use Default Value

This control lets you add your own CSS rules to the page. For example, you may want change the display of article text to tiny, dark black print. You might add the rule:

☐ Use Default Value

TR.entryitem TD {color: #000; font-size: 7pt;}

After you apply this change, your page will look like:

## Traction Software References

MarketResearch347 (#) | [TrackBack](#) | November 11, 2003 | 2:52:42 AM EST

Posted by Jordan Frank | Edited by Chris Nuzum | [View edit history](#)

 1 Attachment |  1 Comment


[bulletin](#)  
[channel](#)


[:Public:headline](#)


[:Public:Useful Example](#)




 p2

Traction Enterprise Weblog products combine the ease of use, directness, and simple deployment of personal weblog technology with group focus, context, security and other capabilities that line up with the working communication needs of business and government. For background on Traction Software Inc and the Enterprise Weblog market, please see [www.TractionSoftware.com](http://www.TractionSoftware.com). Here are a few references: 01 

What a great sample article! 

[Chris Nuzum, MarketResearch1466, May 4, 2005, 11:07:31 AM EDT] 

Yeah, it really shows a lot. 

[Chris Nuzum, MarketResearch1467, May 4, 2005, 11:07:48 AM EDT] 

### [A Better Way for Businesses to Blog](#)

Traction Software bends the blog to the needs of business. "We tend not to think of corporate leaders and FBI officers as natural bloggers, but a large component of these jobs and many others is recording, sharing, and logging information. Judging by blogging's popularity among people with seemingly very little to say, it appears to be a natural human instinct. So it makes sense for simple blogging tools to reach the corporate world, where they can be put to work." - Rafe Needleman's What's Next Newsletter, Business 2.0 Aug 4, 2003.

[Traction Software Delivers Enterprise Weblog Solution to the Western States Information Network, May 12, 2003.](#)

[Traction links WSIN's law enforcement analysts, watch center and management across six western states. See Tech Success: Weblogs help Justice take a bite out of crime, Washington Technology, July 21 2003.](#)

---

## Using the Skin Stylesheet Editor

Doc318: March 22, 2008 4:25 PM, Posted by Documentation Importer, Edited by Greg Lloyd

This page allows you to define your own custom stylesheet for the Ocean skin. Not all [Traction Skins](#) provide stylesheet control - but those that do use the skin customization controls described in [Customizing Skin Settings](#). Once you save your stylesheet, you can set it as the server default, or other individual users can select it as their preferred stylesheet.

This key may help you in creating your own customized color scheme.



Edit Stylesheet - Microsoft Internet Explorer

Edit Stylesheet

Ocean Stylesheet


html/css/ocean/colors/ocean.css

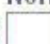
Choose File


Ocean Stylesheet

Delete


Header


1:  #69c


2:  #fff


3:  #fff

Primary Content

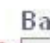
4:  #fff


5:  #666


6:  #69c


7:  #999

Secondary Content

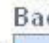
8:  #eee


9:  #468

10:  #122869

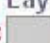
11:  #666


Selections


12:  #d0e0ff


13:  #666

Miscellaneous

14:  #ccc

15:  #ccc

16:  #dddddd0

17:  #f5f5f5

Logo Image

Left

Style Form Controls

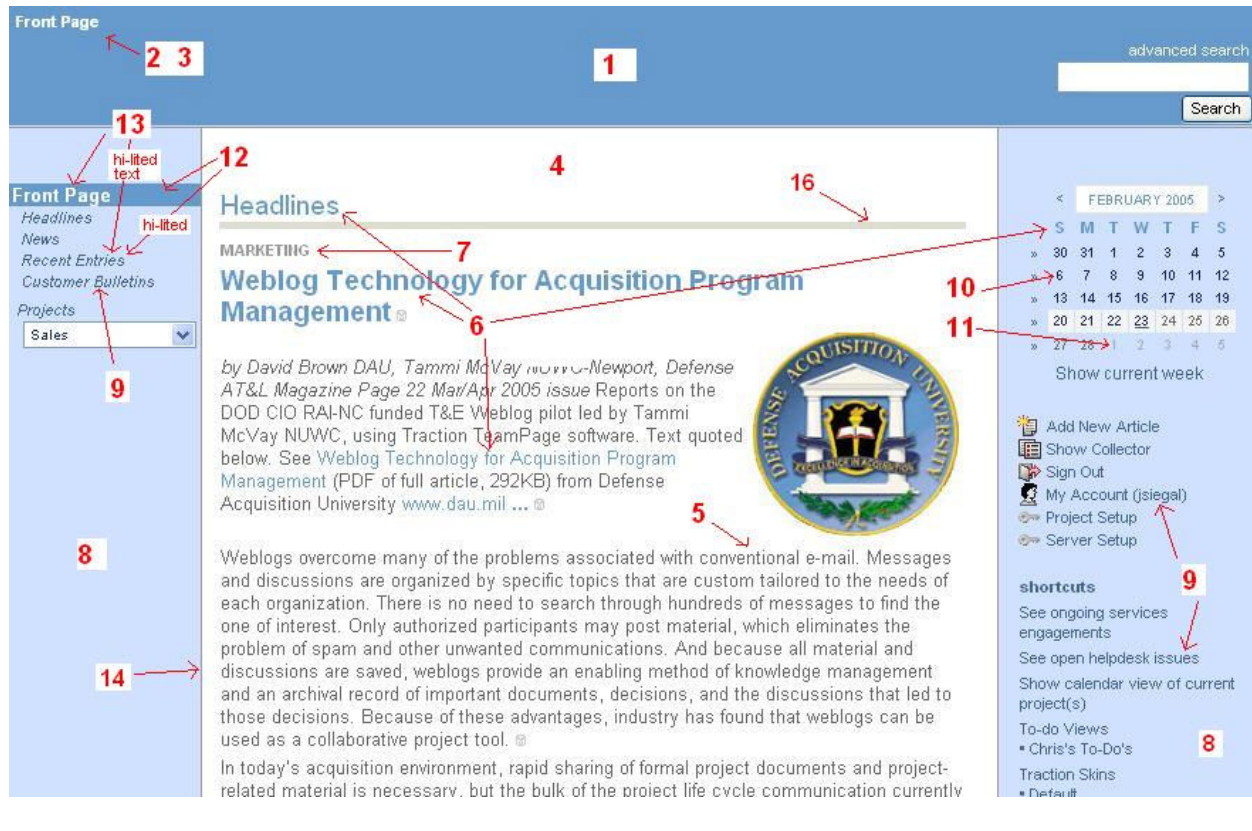
None

Advanced

Overrides

This block of text will be inserted into the bottom of the stylesheet. Specific rules to be specified using CSS syntax.

Control styling can make it difficult for some users to identify form controls.



## Search Skin - Configuring an External Search Engine

Doc236: March 22, 2008 4:16 PM, Posted by Documentation Importer, Edited by Greg Lloyd

Traction includes an internal search engine which keeps a current index of all articles, and delivers results based on each user's *Read Article* permissions.

However, sometimes you will want to point your own search engine at Traction, to incorporate results with content from other sources, or to search attachments. Traction's *Search* skin is designed to be read by Search engines and is exposed automatically to known search engines.

When configuring your search engine, simply provide the base URL of your Traction server:

<http://servername:portnumber>

You might (with Verity® Ultraseek™, for example) need to include a final / character as well.

<http://servername:portnumber/>

Consult the administrator guide for your search engine to determine the proper configuration.

## Permissions for Search Skins

You can configure your search engine to read content available to *Visitors*, or you can provide a *username* and *password* to the Search engine.

If you configure your search engine with a *username* and *password*, Traction will present a Realms

authentication challenge.

## **Server Response to Search Engines**

Traction will deliver the *Search* skin to Search engines that use any search engine user agent name known to Traction. If your search engine is not working or Traction appears to deliver it an HTML skin, please contact Traction Technical Support and we will work with you to add your search engine to the list of search engines recognized by Traction.

---

## **RSS and Atom - Configuring Feeds from Traction**

Doc230: March 22, 2008 4:15 PM, Posted by Documentation Importer, Edited by Jordan Frank

### **RSS and Atom Skins - Configuring News Feeds from Traction**

Traction includes two skins that generate feeds for use with news aggregators: the RSS skin, which generates RSS 2.0 feeds; and as of Traction release 3.5, the Atom skin, which generates Atom feeds.

### **Traction News Feeds Are Configurable**

Like other Traction skins, the RSS and Atom skins generate views that expose only those articles that a given user has permission to read, and include entries based on the active date range, project range, and other parameters.

The selected view can be as simple as the *Front Page* or a *Project Newspaper*, or it contain any combination of *Projects*, *Labels*, *Authors*, or text.

To configure a news feed, simply navigate (via the Traction interface, [Introduction to the Rapid Selector Guide](#) command, or Advanced Search) to the view for which you would like a feed. Then copy the RSS or Atom shortcut from one of the links that appear on any *Front Page*, *Newspage* or *multi-entry* view. Here is what the links look like in the Mexico skin.



If you click on the RSS Feed or Atom Feed links, you will see a version of the feed that is styled for your Browser. Your RSS reader, however, will receive the appropriate XML format when it accesses the same link.

**Important News Feed Tip:** Many Traction URLs have a *start date* specified. This is done by including an *sdate=* parameter on the URL, e.g. *&sdate=20030725* on the URL indicates that the view should start on July 25, 2003. If you generate your own RSS or Atom URL by adding *&skin=rss* or *&skin=atom* to an existing URL, you should remove the *sdate* parameter from the URL. This allows the start date to float to the current date, which is the default.

### **Permissions for RSS and Atom**

If the view specified requires a login, Traction will present a Realms authentication challenge. Most news aggregators allow you to enter your authentication information at the time you set up the feed subscription. But some news aggregators may need to be configured to respond to an authentication



challenge.

## **Configuring an XSLT Stylesheet for the RSS and Atom Feeds**

See the sections [RSS-to-HTML XSL Stylesheet](#) and [Atom-to-HTML XSL Stylesheet](#) for details.

---

## **Trackback - In and Out**

Doc293: March 22, 2008 4:22 PM, Posted by Documentation Importer

TrackBack allows a person in one weblog to alert "tell" another weblog when referring to an article in that target weblog. The TrackBack "ping" that is sent can include the name of the weblog, the name of the author, a link back to the article the author wrote and an text excerpt.

Traction supports the ability to send a TrackBack Ping to another Traction server, another TrackBack enabled weblog, or any other system capable of receiving a TrackBack ping. The following topics describe how to [Trackback InboundSetup](#) and how to Send a TrackBack Ping.

Note: You would not want to send a TrackBack within a Traction server. Within a Traction server, it is more robust and simple to [Add a Comment to a Paragraph or Article](#) or [Making Links to Traction Articles](#). Both of these actions may be performed across Traction projects.

---

## **Trackback InboundSetup**

Doc295: March 22, 2008 4:22 PM, Posted by Documentation Importer

You can think of a TrackBack as a kind of comment sent by visitors using the TrackBack protocol rather than Traction's comment forms or Traction Instant Publisher. The writers of TrackBacks can not be mapped to specific Traction users because the current version of the widely used TrackBack protocol does not provide authenticated (name + password) access, although this may change in the future due to the threat of spam. This section shows you how to configure your Traction server or selected projects to record and show TrackBacks. Within Traction, TrackBacks are either merged into the list of Comments on an article, or appear as links in a *TrackBack* relationship in *Related Entries*.

Note: TrackBack does not apply **within** a Traction server, only between two Traction servers or from another weblog to your Traction server. The same function is handled within a Traction server through a [Making Links to Traction Articles](#) or [Add a Comment to a Paragraph or Article](#). An incoming Traction link will appear in the **Referenced by** section in **Related Entries**. A **Comment** appears inline.

## **Enable Incoming TrackBack**

To enable incoming TrackBacks the checkbox next to item 2 of the [Server Setup - Project Tab](#) must be checked, **and** at least one project must allow *Visitor* to have *Create Article* permission.

**Note that by enabling Incoming TrackBack's you are potentially allowing unknown persons to send an unlimited number of TrackBacks (including spam) that will be recorded in your Traction Journal.** It's much safer to enable TrackBacks if you are running your Traction server within a firewall, but the choice is yours.

## ② Enable Incoming Trackback ☒

Unchecking this prevents all projects from accepting incoming trackbacks.

Trackback Project

Trackback ▼

💡 When a Trackback is received, if the target project does not allow entries to be posted by Visitor, they will be posted to this project. Therefore, this should be a project that allows Visitors to create new articles.

By default, TrackBacks are posted to a project's designated moderation project (**generally itself**). This is the same project where comments are directed by default. The moderation project is specified in [Project Setup - Status](#). In the example below, the *Comments* project is selected.

## ⑤ Moderation Project for posting comments: Comment ▼

☒ only allow posting of comments to the Moderation Project.

Note: The checkbox above (only allow posting of comments to the Moderation Project) does not have to be selected. The setting of the checkbox does not affect the project used to record TrackBacks (the checkbox does permit comments locked to a specific project, see [Project Setup - Status](#))

If you wish to designate a server-fallback TrackBack project, in case the selected moderation projects do not support visitor posts, you can specify one in [Server Setup - Project Tab](#):

## ② Enable Incoming Trackback ☒

Unchecking this prevents all projects from accepting incoming trackbacks.

Trackback Project

Trackback ▼

💡 When a Trackback is received, if the target project does not allow entries to be posted by Visitor, they will be posted to this project. Therefore, this should be a project that allows Visitors to create new articles.

You must provide Create Articles permission to Visitor in the TrackBack project you select.

## Show TrackBacks on Front Page or Newspaper Sections

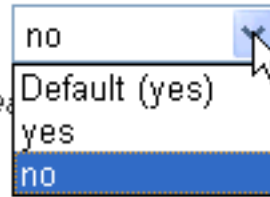
You can choose whether or not to show TrackBacks in Front Page or Newspaper Sections. This setting is handled in [Changing Front Page and Newspaper Section Layouts](#)

## Show TrackBacks with or without Comments in Articles

TrackBacks can be displayed inline with comments, or as a list of *TrackBacks* in *Related Entries*. This setting is setup as a default in [Server Setup - Defaults](#) and each user can change it in [Personal Preferences](#). To change the preference to *no*, select the no option as in the example below:

### Show Trackbacks With Comments

*If yes, Trackbacks to articles will appear*



Examples showing both options are provided in the [Trackback InboundSetup](#) section below.

### **Posting a TrackBack from another Weblog to Traction**

In the 2col, 3col, or variant skins (earth2, earth3, black2, black3, etc..) You will see the TrackBack url listed after the permalink (#):

## Sample Article Published to Public as News

Public0 (#) | trackback | 7/16/02 10:28 am  
 posted by admin | edited by admin | view edit history  
 cross references | 1 comment

The TrackBack url can be copied from the TrackBack link shown, and can be copied from the article header as shown above. Or, the link can be formed as follows:

<http://traction.example.com:port/traction/trackback/TractionID>

You can copy this URL into weblog software that supports TrackBack pings.

### **Viewing TrackBacks to Articles**

When you save the entry in the weblog, it pings Traction.

By default, the TrackBack appears as a comment underneath any other article comments:

## Sample Article Published to Public as News

news



Public0 (#) | [trackback](#) | 7/16/02 10:28 am  
 posted by [admin](#) | edited by [admin](#) | [view edit history](#)  
 cross references | [2 comments](#)

This is a sample article published to the Public project as News. It is immediately visible and searchable to all visitors. 01 

You can always edit it, reclassify it to remove the News label, or erase it. 02 

### Article Comments:

This is a regular comment.  
[\[admin, Comment11, 12/5/03, 9:23 pm\]](#)  

Test Entry

This is a trackback to a Traction entry.

Trackback from [Arbitrary](#).  
[\[Visitor, Comment12, 12/5/03, 9:30 pm\]](#)  

in the project



If *Show TrackBacks with Comments* is set to No, the TrackBacks will then be listed only in the *related entries* section at the bottom of the article:

**Article Comments:**

This is a regular comment.

[admin, Comment11, 12/5/03, 9:23 pm]  

in the project

▼

**Related Entries:**

---

**commented on by (1)**

Comment11: re: Sample Article Published to Public as News

**referenced by (1)**

Private15: Publish articles to Private or Public project

**trackbacks (1)**

Comment12: re: Sample Article Published to Public as News

As with any related entry, you can click the related entry type (*TrackBacks*) to see a multi-entry view including the article, comments on the article, and TrackBacks to the article. See the example below:

July 16, 2002

## Sample Article Published to Public as News

news



Public0 (#) | [trackback](#) | 7/16/02 10:28 am  
 posted by admin | [edited by admin](#) | [view edit history](#)  
[cross references](#) | [1 comment](#)

This is a sample article published to the Public project as News. It is immediately visible and searchable to all visitors. 01 

You can always edit it, reclassify it to remove the News label, or erase it. 02 

### Article Comments:

This is a regular comment.  
 [admin, Comment11, 12/5/03, 9:23 pm]  

December 5, 2003

## re: Sample Article Published to Public as News



Comment12 (#) | [trackback](#) | 12/5/03 9:30 pm  
 posted by Visitor  
[cross references](#)

Test Entry 01 

This is a trackback to a Traction entry. 02 

Trackback from [Arbitrary](#). 

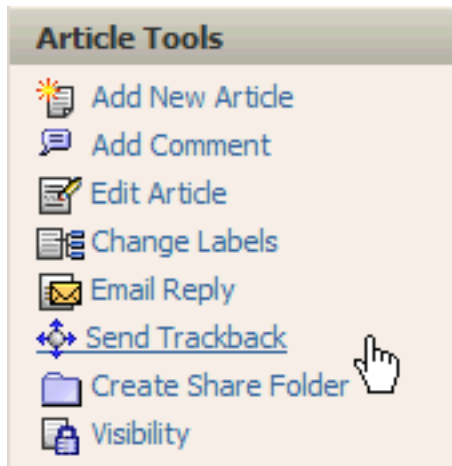
### **Trackback - Sending Trackback Pings from Traction**

Doc294: March 22, 2008 4:22 PM, Posted by Documentation Importer

It is easy to send a TrackBack ping from an article you posted in your Traction server to another TrackBack enabled server.

First, write and post an article, or navigate to an existing article. You must be in a *single-entry* view.

Next. Click *Send TrackBack* from the Article Tools menu:



Wait a moment for the following dialog box to appear. Traction needs time to auto-discover TrackBack URLs for links that are in your article.



**Send Trackback from Comment11**

**Automatically Discovered URLs to Ping:**

☐ This is a typical blog entry <http://get-traction.com:8083/cgi-bin...

A ping record will be logged to  
 Comment  
☐ Log excerpt

**Additional Trackback URLs to Ping:**

**Title:**  
 Arbitrary

**Excerpt:** Include First 200 Characters ☒ Text Only

This is a typical blog entry This is a typical blog entry From http://get-traction.com:8083, see original source.

**Your Blog Name:** Traction Communicator Journal | Comment


Cancel Ping

At the top is a list of automatically discovered ping URLs. You should check to see that the URLs you are pinging are correct.

If auto-discovery did not work or you would like to add URLs, you can type in *Additional TrackBack URL's*

to *Ping* in the next section.

In the upper right of the form you see the following choice of *project*, and whether you want to log the excerpt. In the selected *Project*, Traction will record the fact that you sent a TrackBack ping from the selected *Article*. If you choose to *Log Excerpt*, an *Article* will be posted in the selected *Project* with the contents of the *Excerpt* you send.

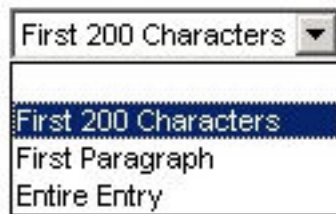


A ping record  
will be logged to

Comment ▼

☐ Log excerpt

The title, excerpt, and blog name default to the content of the *Article* posted in Traction. The excerpt contains the text you wish to send in your Ping to the receiving server. You can select whether the excerpt should contain your first 200 characters, first paragraph, or entire article entry, as shown below:



First 200 Characters ▼

First 200 Characters

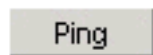
First Paragraph

Entire Entry

You may also type your own excerpt.

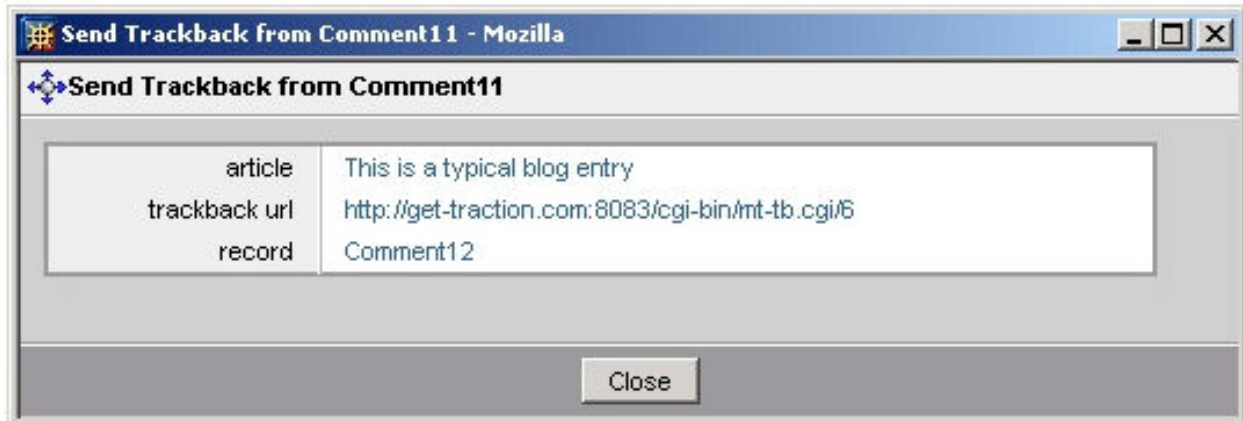
Next to the drop-down, there is an option to send *text* or *HTML...* if you are pinging a Traction server, HTML works nicely.

Finally, click the Ping button:



Ping

A dialog indicates the sites that were successfully pinged:



## Audit Trail

Doc537: December 27, 2008 1:45 PM, Posted by Paul Needham, Edited by Jordan Frank

Like any other wiki, the Audit Trail in Traction TeamPage includes Edit History, but goes much further. Like an accounting journal, the Traction Journal records every change made to the system, even cases where labels are added to an article and where articles are e-mailed from Traction. The audit trail includes a full trail of all articles posted as well as all article edits, comments, addition or removal of labels from an article, emails sent out, page name additions and removals, moderation events and other activities.

## What Can You Learn from the Audit Trail?

**For record keepers**, the audit trail provides an exceptionally deep and useful view of article (and comment) history.

**For users**, the audit trail can help answer questions like:

- "Who removed the *requirement* label and when did they do that?"
- "Who tagged this *feature* with the *done* label?"
- "Was this e-mailed to the customer before or after the last edit?"
- "Was the third comment made before the *Priority 1* label was tagged to this article?"
- "Which version of this article was Published when the 2nd comment was made?"
- "When was a particular Page Name added or removed?"

Looking beyond the history of a single article, its also possible to query Traction for certain types of events in the audit trail. For example, you can discover "What features were tagged with the Done label last week?" The results will display the articles where that happened, even if that Done label was since removed (such that it is no longer present on the article).

Attachments may also have an edit history. Attachments are maintained in the [WebDAV](#) (Web Distributed Authoring and Versioning) document store and may be versioned selectively or you can set mandatory versioning in projects.

## History and Cross Reference Views

To explain the History and Cross Reference views, we can take a look at the article titled TIP Editor, and then take a look at its history and cross-reference map.

You can see that the article currently has 5 labels (Done, Feature, P3, V2, and Feedback from StarCustomer project), 2 comments on a paragraph, 1 comment on an article, and 3 Page Names (TIP Editor and Instant Publisher in this project and a global name TIP). In the Related Articles area, you can also see this Article was e-mailed twice, references 1 article and is referenced by 2 other articles.

Article

History

TIP Editor

ProductAlpha58 | June 9, 2003 | 7:48 AM

Posted and Edited by Jordan Frank

2 Attachments | 3 Comments

done

Feature

P3

V2

:StarCustomer:feedback

As prompted by Jack Star in StarCustomer8.02: Installation Feedback we need to extend the TIP's functionality from publish to also include edit capabilities. This will require that the browser launch TIP (if installed) when prompted to Edit Article. The content of the article should be presented in rich text and provide the familiar controls including:

- Font style (Italic, Bold, Underline)
- Font Color (foreground and background)
- Paragraph Formatting (indent, outdent, justification controls)
- Cut, copy, paste, undo

Article Comments

This is a flash video showing TIP V2's edit feature in action.

<http://tractionservers.com/pub/TIP2EditDemo.swf>

Jordan Frank | ProductAlpha56 | September 30, 2003 | 10:52 PM

Add a Comment on this Article

B

I

U

Paragraph

HTML

Post Comment

in the project

ProductAlpha

Publish

Attachments

2. Publisher Spec Review.ppt (12.5 KB)

Edit

Phase review presentation on publisher features

3. Heading Style Guide.doc (10.5 KB)

Edit

Overview and format of heading and other style types

Related Articles

emailed by (2)

JFrank313: Emailed Articles

ProductAlpha539: Emailed Articles

referenced by (2)

MarketResearch2462: Analysis of Competitor A

ProductAlpha74: Product Alpha V2 Requirements

references (1)

StarCustomer8: Installation Feedback

Similar Articles

Find Similar Articles

Article Names

Instant Publisher

TIP (Global)

TIP Editor

When you click the History tab, you see breakout sections for Edit, Moderation, Name and Label History. These breakouts are followed by a Complete History that opens up the interleaved history of all types of actions that have occurred.

Article
History

## History of TIP Editor

ProductAlpha58 | June 9, 2003 | 7:48 AM  
 Posted and Edited by Jordan Frank  
 2 Attachments | 3 Comments

Edit History
Compare Selected Versions

Traction ID	Date	Time	Editor	Description of Changes	Status
ProductAlpha1025	May 7, 2008	10:47:41 PM EST	Jordan Frank	added 2 page names	PUBLISHED
ProductAlpha1023	May 7, 2008	10:46:01 PM EST	Jordan Frank	added Font Color	DRAFT
ProductAlpha719	Aug 24, 2006	12:22:16 PM EST	Guest		PUBLISHED
ProductAlpha538	Dec 8, 2005	2:25:07 PM EST	admin		PUBLISHED
ProductAlpha58	Jun 9, 2003	7:48:11 AM EST	Jordan Frank	Original Version	PUBLISHED

### Name History

Traction ID	Date	Time	Editor	Action	Name ID	Linked To	Status
ProductAlpha1025	May 7, 2008	10:47:41 PM	Jordan Frank	+TIP	109 (*)	ProductAlpha58	PUBLISHED
ProductAlpha1025	May 7, 2008	10:47:41 PM	Jordan Frank	+Instant Publisher	108 (ProductAlpha)	ProductAlpha58	PUBLISHED
ProductAlpha1023	May 7, 2008	10:46:01 PM	Jordan Frank	+TIP Editor	107 (ProductAlpha)	ProductAlpha58	DRAFT

### Moderation History

Traction ID	Date	Time	Moderator	Action	Version
ProductAlpha1027	May 7, 2008	10:49:08 PM	Jordan Frank	Unpublished	ProductAlpha1023
ProductAlpha1026	May 7, 2008	10:47:47 PM	Jordan Frank	Published	ProductAlpha1025
ProductAlpha1024	May 7, 2008	10:46:30 PM	Jordan Frank	Published	ProductAlpha1023

### Label History

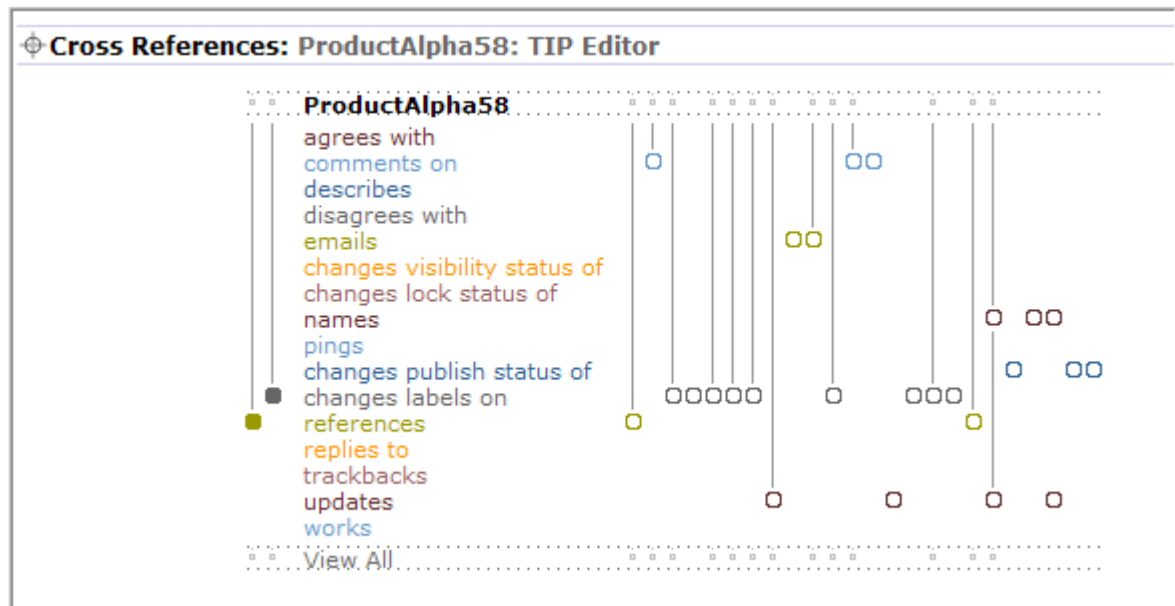
Traction ID	Date	Time	Labeler	Action	Item
ProductAlpha725	Aug 29, 2006	1:18:50 PM	admin	+done, -todo	ProductAlpha58
ProductAlpha724	Aug 29, 2006	1:17:59 PM	admin	+Requirement	ProductAlpha58.03
ProductAlpha720	Aug 24, 2006	12:24:25 PM	Guest	+StarCustomer:feedback, -:StarCustomer:see	ProductAlpha58
ProductAlpha662	Jun 21, 2006	10:29:51 AM	Jordan Frank	+P3, -P1	ProductAlpha58
ProductAlpha537	Dec 7, 2005	2:17:04 PM	Jordan Frank	+P1, -P2	ProductAlpha58
ProductAlpha357	May 4, 2005	11:15:54 AM	Jordan Frank	+P2, -P1	ProductAlpha58
ProductAlpha199	Sep 17, 2004	1:39:29 PM	Guest	+todo, -done	ProductAlpha58
ProductAlpha180	May 25, 2004	11:29:08 AM	Jordan Frank	+StarCustomer:see	ProductAlpha58
ProductAlpha179	May 25, 2004	11:28:58 AM	Jordan Frank	+done, -todo	ProductAlpha58
ProductAlpha58	Jun 9, 2003	7:48:11 AM	Jordan Frank	+P1, +todo, +Feature, +V2	ProductAlpha58

### Complete History

Show Reference Map

When you click on Show Reference Map, you see a map view showing history (left to right) of all actions and relationships.

For example, *starting at the first bubble on the Updates line*, you can see that it was edited (updates) and then it was emailed 2 times (emails), then labels were changed (changes labels) then 2 comments (comments on) came in before it was edited (updates) again.



Clicking View All takes you to a vertical time history view with more detail, including the date of the event, the user, and, in the cases of Changes Labels On, the actual label change action (added P3, removed P1). Here is an image of the slice that is narrated above:



ProductAlpha719 TIP Editor	August 24, 2006 guest	updates	ProductAlpha58
ProductAlpha718 re: TIP Editor	August 24, 2006 jfrank	comments on	ProductAlpha58
ProductAlpha717 re: TIP Editor	August 24, 2006 jfrank	comments on	ProductAlpha58
ProductAlpha662 +P3, -P1	June 21, 2006 jfrank	changes labels on	ProductAlpha58
Jfrank313 Emailed Articles	March 30, 2006 jfrank	emails	ProductAlpha58
ProductAlpha539 Emailed Articles	December 8, 2005 admin	emails	ProductAlpha58
ProductAlpha538 TIP Editor	December 8, 2005 admin	updates	ProductAlpha58

Any of the items in the view can be clicked to get even more detail about what happened.

## Perspective Views

Perspective views are a very powerful way to examine history of label changes.

With Perspective views, it's possible to look at Traction with the label set **as it was** based on any time period or perspective. So you can answer questions like:

- "What articles were marked Done in the Engineering project last week?" or
- "What Issues were labeled To Do and Priority 3 as of June of 2005?"

Perspective views also come in handy if you change do a batch label change because your terms have changed (e.g. change the label Weblog to the label Blog) but at some point later you want to see how the content was organized, rather than how it *is* organized. See [Changing Perspective](#) for more information on how these views work and how to use Rapid Selector to enter a perspective view.

## Email Reply Templates

Doc83: March 22, 2008 3:56 PM, Posted by Documentation Importer

In cases where Traction is used to receive and respond to email, it is possible to specify a one shared list of boilerplate responses in the [The Collector](#). See the section [Email Reply Templates](#) for instructions.

## Project Templates

Doc223: March 22, 2008 4:14 PM, Posted by Documentation Importer

## Project Template Defaults

Project templates allow you to collect a common set of labels, newspaper sections, and other properties associated with a particular type of project, and to create new projects that take on the template's properties. Labels and newspaper sections can be copied from a project template at project creation time, or at any time after.

As of version 3.7, Traction's standard project templates are:

- *Blog* - use this template for a project that will serve as an ordinary blog. It has a typical complement of labels. Its sections are Recent Articles, Recent Comments, Recent To-Do, and Recent Done.
- *Intelligence* - this template can be used for projects that will serve as a space for gathering competitive intelligence information. It has additional CI-oriented labels, such as question, objective, HUMINT, and analysis, and several sections: Headlines, Analysis Reports, Questions To Do, Objectives To Do, Recent Articles, Bulletins, Recent To-Do, and Recent Done.
- *News* - for use with a project that will be a space for news and information. It has a usual complement of news-oriented labels, and it has Headlines, Recent Articles, Bulletins, Recent To-Do and Recent Done sections.
- *Project Team* - use this template to create a project for team collaboration. Besides the usual labels, this template has collaboration-oriented tags such as status, issue and meeting. Its sections are Headlines, Status Report, Meeting Notes, Issues To Do, Questions To Do, Recent Articles, Bulletins, Recent To-Do, and Recent Done.
- *Wiki* - this template should be used to create projects that will be used as wikis. This template is special, because it doesn't have any special labels, but it has other special properties. It defines only one newspaper section, which is a specific articles section that simply points to article 1 in the created project, effectively making the newspaper an authored page that is governed by a single article. It also sets the [Default Entry Style](#) to *Page* instead of *Article*, since in a wiki project model, entries are meant to represent wiki pages.

All the standard project templates have the headline, to do, done, and FYI, labels, and the Project Team, Intelligence, and News templates all have bulletin and FAQ labels.

The template files can be edited, but it is recommended that instead of editing a standard template, you make a copy and make it an entirely separate template (this will prevent your changes from being overwritten or deleted during software upgrades). Naturally, you can also add your own project template files created from scratch. These files are located in a standard location. To see them:

- From your browser:  
<http://traction.example.com:port/config/project/templates>
- On the computer running your Traction Server (assuming the software was installed directly under drive C:)

C:\Program Files\Traction\traction\server\config\project\templates

## Creating Your Own Project Template

If you are interested in creating your own project template, please read the Traction Knowledge Base article, "[How do I create my own project template?](#)".

## Changing Perspective

Doc24: March 22, 2008 3:47 PM, Posted by Documentation Importer

Traction's perspective feature is a seldom-used but very powerful capability that allows you to see what labels were present at a given time in the past. With the perspective feature, you can:

- rewind to a given point in time, considering only the label changes that took place before that time, or more generally
- restrict the range of time from which label changes are in effect.

Once you've set your perspective, you'll see the state of labels was or would have been if only those label changes performed during the perspective time period were considered. This allows you to answer questions such as, "What was on the Engineering project's to-do list on January 1, 2005?" Perspective effectively ignores all changes to labels that happened outside of the specified range of time. When used in conjunction with the time slice (i.e., navigating by date), this is an especially powerful feature.

When you've changed your perspective, standard Traction skins include a reminder at the top of the view:

SciTech » [Recent Articles](#) | [Recent Comments](#) | [All Recent](#)

[Archive for January 1, 2006 - March 31, 2006](#) | [Go to Today](#)

Displaying all labels appearing during January 1, 2000 - December 31, 2005 | [Show Current Labels](#)

## SciTech Newpage

### HEADLINES

Add

## Scientists Discover How Cancer Spreads

*Disease sends bone marrow cells to prepare new tumor sites, study finds*

LONDON - Scientists have discovered how cancer spreads from a primary site to other places in the body in a finding that could open doors for new ways of treating and preventing advanced disease. ...

David Shepperton / SciTech150 / December 8, 2005 / 9:54:41 AM EST / 3 Comments

## Supernova 1987A Decoded

Supernova 1987A is the closest supernova event since the invention of the telescope. It was first seen in February 1987 in the nearby Magellanic cloud, a dwarf companion galaxy of the Milky Way, and only 169,000 light years from Earth. Close observation since 1987 has now provided proof that supernovae are catastrophic electrical discharges focused on a star.



The commands to change perspective are detailed in the [Changing Perspective with the Rapid Selector](#) topic. The command used to reach the example view pictured above was  
/perspective 2000jan1 - 2005dec31

---

## Topics vs. Relationships

Doc292: March 22, 2008 4:22 PM, Posted by Documentation Importer

## Labels vs. Relationships

Traction supports two main types of connecting content: labels and relationships.

Labels (sometimes referred to as topics, tags, categories, etc.) are applied to articles, or to individual paragraphs (e.g. to do, headline, etc). Labels connect content indirectly.

Relationships describe direct connections between articles. Traction itself defines many types of relationships, which are not created in your journal until the first time they are needed.

When a relationship is used to connect two articles, you can read it as a sentence, e.g. "Research11 references Sample12.02".

Subject	Verb	Direct Object
Research11	References	Sample12.02

Since relationships in Traction are bi-directional, this is also expressed as "Sample12.02 is referenced by Research11".

When the subject comes first, this is the active voice. When the direct object comes first, this is the passive voice. A configuration file (config/misc/referencetypes.properties) defines how each voice should be expressed in the interface.

**Important!** This file is overwritten when you upgrade Traction. If your application requires you to create customized Active and Passive forms, be sure to make a backup of this file; you will need to merge your changes with any changes included in the upgrade.

The table below lists the built-in relationship types. You can add your own types. If you don't define active/passive forms by editing the config file, the name of the relationship is used for both forms.

Relationship	Meaning	Active/Passive Forms
References	Used when one article mentions another's Traction ID. This is referred to as a "reference" or "citation"	references referenced by
Comments	One article is a comment on another	comments on commented on by

Changes Labels	Reclassification records use this relationship.	changes labels changes labels by
Updates	When an article is edited, the newer article expresses an "updates" relationship with the original.	updates updated by
Emails	When an article is enclosed in an outgoing email, it has an "emailed by" relationship with the article posted as the cover letter.	emails emailed by
Replies	When an email reply is sent from Traction, the replies relationship is used.	replies to is replied to by
Erases	When an article is erased, this relationship is used between the article and the explanation for the erasure.	erases erased by
Trackbacks	When a TrackBack is received from outside Traction and is posted, this relationship is established between the TrackBack and the article it refers to.	trackbacks
Pings	When traction sends a TrackBack ping and the ping is logged, this relationship is used to associate the article and the contents of the ping.	pings
Describes	Not currently used.	describes described by
Summarizes	Not currently used.	summarizes summarized by
Agrees	Not currently used.	agrees with agreed with by

Disagrees	Not currently used.	disagrees disagreed with by
-----------	---------------------	--------------------------------

## ***Backup and Maintenance***

Doc19: March 22, 2008 3:46 PM, Posted by Documentation Importer

Traction generally requires very little administrator attention. The three things you should keep in mind are:

### ***Backup***

You should regularly backup the `server` folder and all its subfolders. If that folder does not include your journal files, you should also back up the folder containing the journal files.

On Macintosh, Solaris, and Linux systems you can copy, tar, or zip these folders while the system is running.

On Windows systems we recommend that you use commercial backup software capable of backing up open files. Most Traction files are only open while they are being used, but the lockfile and certain derived index files may be held open longer. If only the files `lock` and files ending with `.dat` or `.map` are skipped, an index rebuild will completely restore the backup. However, a sharing violation can cause a folder copy to stop part-way through.

### ***Updates and Upgrades***

It's good to keep your software up-to-date. See [Installing Traction TeamPage Upgrades](#).

### ***Rotate Log Files***

Depending on the amount and type of logging that you enable, the log file can get quite large. Traction provides an archive button to rename the current logfile to one with a dated filename. If disk space is a concern, you may wish to periodically compress or remove these logfiles.

See [Server - Server Files](#) for more information.